

PROCEEDINGS



The Second International Conference on Science,
Engineering and Technology

“Sustainable Development in Developing
Country for Facing Industrial Revolution 4.0”

September 5-7, 2019

SKA Convention & Exhibition Center, Pekanbaru, Riau, Indonesia

Editors:

Arbi Haza Nasution

Evizal Abdul Kadir

Luiz Moutinho

Organizer :



Co-Organizers :



UNIVERSITI
TEKNOLOGI
MARA



Infrastructure
University
Kuala Lumpur

ICoSET 2019

Proceedings of the
Second International Conference on
Science, Engineering and Technology

Riau - Indonesia

September 5 - 7, 2019

Copyright © 2020 by SCITEPRESS – Science and Technology Publications, Lda.
All rights reserved

Edited by Arbi Haza Nasution, Evizal Abdul Kadir and Luiz Moutinho

Printed in Portugal
ISBN: 978-989-758-463-3
Depósito Legal: 473348/20

<http://icoset.uir.ac.id>

BRIEF CONTENTS

INVITED SPEAKERS	IV
ORGANIZING COMMITTEES	V
PROGRAM COMMITTEE	VI
FOREWORD	VII
CONTENTS	IX

INVITED SPEAKERS

Prof. EE-Peng Lim
Singapore Management University
Singapore

Assoc. Prof. Yuichi Sugai
Kyushu University
Japan

Prof. Ir. Dr Sharul Kamal Abdul Rahim
Universiti Teknologi Malaysia
Malaysia

Assoc. Prof. Dr. Norma binti Alias
Universiti Teknologi Malaysia
Malaysia

ORGANIZING COMMITTEES

GENERAL CHAIR

Dr. Arbi Haza Nasution, M.IT, Universitas Islam Riau, Indonesia

TECHNICAL PROGRAM CHAIR

Dr. Evizal Abdul Kadir, ST., M.Eng, Universitas Islam Riau, Indonesia

GENERAL CO-CHAIR

Dr. Eng. Muslim, ST., MT, Universitas Islam Riau, Indonesia

EDITORIAL CHAIR

Yudhi Arta, S.Kom., M.Kom, Universitas Islam Riau, Indonesia

STEERING COMMITTEE

Prof. Josaphat Tetuko Sri Sumantyo, Ph.D, Chiba University, Japan
Prof. Ir. Dr. Sharul Kamal Abdul Rahim, Universiti Teknologi Malaysia, Malaysia
Prof. Toru Ishida, Kyoto University, Japan
Prof. Ee-Peng Lim, Singapore Management University, Singapore
Prof. Dr. H Syafrinaldi SH, MCL, Universitas Islam Riau, Indonesia

PUBLICATION AND RELATIONSHIP CHAIR

Dr. Syafriadi, S.H., M.H., Universitas Islam Riau, Indonesia

FINANCIAL CHAIR

Ause Labellapansa, ST., M.Cs., M.Kom., Universitas Islam Riau, Indonesia

EDITORIAL BOARD

Putra Efri Rahman, S.Kom, Universitas Islam Riau, Indonesia
Khairul Umam Syaliman, S.T., M.Kom., Politeknik Caltex Riau, Indonesia
Winda Monika, S.Pd., M.Sc., Universitas Lancang Kuning, Indonesia
Panji Rachmat Setiawan, S.Kom., M.M.S.I., Universitas Islam Riau, Indonesia
Rizdqi Akbar Ramadhan, S.Kom., M.Kom., Universitas Islam Riau, Indonesia
Anggiat, Universitas Islam Riau, Indonesia
Arif Lukman Hakim, Universitas Riau, Indonesia

PROGRAM COMMITTEE

- Prof. Dr. Tengku Dahril, M.Sc.**, Universitas Islam Riau, Indonesia
- Prof. Dr. Hasan Basri Jumin, M.Sc.**, Universitas Islam Riau, Indonesia
- Prof. Dr. Sugeng Wiyono, MMT**, Universitas Islam Riau, Indonesia
- Prof. Zainal A. Hasibuan, MLS., Ph.D.**, University of Indonesia, Indonesia
- Prof. Josaphat Tetuko Sri Sumantyo, Ph.D.**, Chiba University, Japan
- Prof. Dr. Eko Supriyanto**, Universiti Teknologi Malaysia, Malaysia
- Prof. Dr. Zailuddin Arifin**, Universiti Teknologi MARA, Malaysia
- Prof. Jhon Lee, B.Sc, M.Sc., Ph.D.**, Kyungdong University, Korea
- Prof. Ahmed A. Al Absi**, Kyungdong University, Korea
- Prof. Wisup Bae, Ph.D.**, Sejong University, Korea
- Prof. Kyuro Sasaki**, Kyushu University, Japan
- Prof. Adiwijaya**, Telkom University, Indonesia
- Prof. Ir. Asep Kurnia Permadi, M. Sc, Ph.D.**, Institut Teknologi Bandung, Indonesia
- Assoc. Prof. Dr. Azhan Hashim Ismail**, Universiti Teknologi MARA, Malaysia
- Assoc. Prof. Yuichi Sugai**, Kyushu University, Japan
- Assoc. Prof. Dr. Sonny Irawan**, Universiti Teknologi Petronas, Malaysia
- Assoc. Prof. Hussein Hoteit**, King Abdullah University of Science and Technology, Saudi Arabia
- Assoc. Prof. Dr. Anas Puri, ST., MT**, Universitas Islam Riau, Indonesia
- Kuen-Song Lin, Ph.D.**, Yuan Ze University, Taiwan
- Dr. Shukor Sanim Mohd Fauzi**, Universiti Teknologi MARA, Malaysia
- Dr. Inkyo Cheong**, Inha University, Korea
- Ahn, Young Mee, Ph.D.**, Inha University, Korea
- Hitoshi Irie, Ph.D.**, Chiba University, Japan
- Julie Yu-Chih Liu, Ph.D.**, Yuan Ze University, Taiwan
- Liang Chih Yu, Ph.D.**, Yuan Ze University, Taiwan
- Chia-Yu Hsu, Ph.D.**, Yuan Ze University, Taiwan
- Dr. Amit Pariyar**, University Malaysia Sarawak, Malaysia
- Dr. Madi Abdullah Naser**, Sebha University, Libya
- Dr. Nguyen Xuan Huy**, Ho Chi Minh City University of Technology, Vietnam
- Dr. Chunqiu Li**, Beijing Normal University, China
- Dr. Goh Thian Lai**, Universiti Kebangsaan Malaysia, Malaysia
- Dr. Syahrir Ridha**, Universiti Teknologi Petronas, Malaysia
- Dr. Kemas Muslim L.**, Telkom University, Indonesia
- Dr. Moch. Arif Bijaksana**, Telkom University, Indonesia
- Dr. Satria Mandala**, Telkom University, Indonesia
- Dr. Wahyudi Sutopo**, Solo State University, Indonesia
- Dr. Zulfatman**, University of Muhammadiyah Malang, Indonesia
- Dr. Suranto AM**, UPN Veteran Yogyakarta, Indonesia
- Dr. Eng. Husnul Kausarian, B.Sc (Hons)., M.Sc.**, Universitas Islam Riau, Indonesia

FOREWORD

In the name of Allah, Most Gracious, Most Merciful
Assalamu'alaikum Wr. Wb.,

Welcome to the Second International Conference on Science Engineering and Technology (ICoSET 2019). The advancement of today's computing technology, science, engineering and industrial revolution 4.0 play a big role in the sustainable development of social, economic, education, and humanity in developing countries. Institute of higher education is one of many parties that need to be involved in the process. Academicians and researchers should promote the concept of sustainable development. The Second International Conference on Science, Engineering and Technology (ICoSET 2019) is organized to gather researchers to disseminate their relevant work on science, engineering and technology. The conference is co-located with The Second International Conference on Social, Economy, Education, and Humanity (ICoSEEH 2019) at SKA Co-EX Pekanbaru Riau.

I would like to express my hearty gratitude to all participants for coming, sharing, and presenting your research at this joint conference. There is a total of 84 manuscripts submitted to ICoSET 2019. However only high-quality selected papers are accepted to be presented in this event, with the acceptance rates of ICoSET 2019 is 70%. We are very grateful to all steering committees and both international and local reviewers for their valuable work. I would like to give a compliment to all co-organizers, publisher, and sponsors for their incredible supports.

Organizing such prestigious conferences was very challenging and it would be impossible to be held without the hard work of the program committee and organizing committee members. I would like to express my sincere gratitude to all committees and volunteers from Singapore Management University, Kyoto University, Kyushu University, University of Tsukuba, Khon Kaen University, Ho Chi Minh City University of Technology, University of Suffolk, Universiti Teknologi Malaysia, Infrastructure University Kuala Lumpur, Universiti Malaya, Universiti Kebangsaan Malaysia, Universiti Utara Malaysia, Universiti Teknologi Mara, and Universiti Pendidikan Indonesia for providing us with so much support, advice, and assistance on all aspects of the conference. We do hope that this event will encourage collaboration among us now and in the future.

We wish you all find the opportunity to get rewarding technical programs, intellectual inspiration, and extended networking.

Pekanbaru, 27th August 2019
Dr. Arbi Haza Nasution, M.IT
Chair of ICoSET 2019

CONTENTS

PAPERS

FULL PAPERS

Design of Community-based Ecotourism at Cengkehan and Giriloyo, Wukirsari Village, Imogiri District, Bantul Regency, Special Region of Yogyakarta <i>Suhartono, Sri Mulyaningsih, Desi Kiswiranti, Sukirman, Nurwidi A. A. T. Heriyadi, Muchlis and Iva Mindhayani</i>	5
Prototype Storage Locker Security System based on Fingerprint and RFID Technology <i>Apri Siswanto, Hendra Gunawan and Rafiq Sanjaya</i>	11
Feasibility Study of CO ₂ Flooding under Gross-split Mechanism: Simulation Approach <i>Muslim Abdurrahman, Wisup Bae, Adi Novriansyah, Dadan Damayandri and Bop Duana Afrireksa</i>	15
Online Classroom Attendance System based on Cloud Computing <i>Sri Listia Rosa and Evizal Abdul Kadir</i>	20
Analysis of Porosity and Permeability on Channel Deposit Sandstone using Pore-gas Injection and Point Counting in Sarilamak Area, West Sumatra <i>Bayu Defitra, Tiggi Choanji and Yuniarti Yuskar</i>	26
A Simulation Study of Downhole Water Sink Guidelines Plot Application using Real Field Data <i>Praditya Nugraha</i>	31
Groundwater Exploration using 2D Electrical Resistivity Imaging (ERI) at Kulim, Kedah, Malaysia <i>Adi Suryadi, Muhammad Habibi, Batara, Dewandra Bagus Eka Putra and Husnul Kausarian</i>	35
Risk Identification in Management System Process Integration Which Have Impact on the Goal of Management System Components <i>Nastasia Ester Siahaan, Leni Sagita and Yusuf Latief</i>	41
The Performance of 3D Multi-slice Branched Surface Reconstruction on CPU-GPU Platform <i>Normi Abdul Hadi and Norma Alias</i>	49
Tile-based Game Plugin for Unity Engine <i>Salhazan Nasution, Arbi Haza Nasution and Arif Lukman Hakim</i>	55
Image Segmentation of Nucleus Breast Cancer using Digital Image Processing <i>Ana Yulianti, Ause Labellapansa, Evizal Abdul Kadir, Mohana Sundaram and Mahmud Othman</i>	64
An Integrated Framework for Social Contribution of Diabetes Self-care Management Application <i>Zul Indra, Liza Trisnawati and Luluk Elvitaria</i>	68
Spatiotemporal Analysis of Urban Land Cover: Case Study - Pekanbaru City, Indonesia <i>Idham Nugraha, Faizan Dalilla, Mira Hafizhah Tanjung, Rizky Ardiansyah and M. Iqbal Hisyam</i>	74
The Effectiveness of Rice Husk Biochar Application to Metsulfuron Methyl Persistence <i>Subhan Arridho, Saripah Ulpah and Tengku Edy Sabli</i>	80
Digital Forensics: Acquisition and Analysis on CCTV Digital Evidence using Static Forensic Method based on ISO /IEC 27037:2014 <i>Rizdqi Akbar Ramadhan, Desti Mualfah and Dedy Hariyadi</i>	85

Testing the Role of Fish Consumption Intention as Mediator <i>Junaidi, Desi Ilona, Zaitul and Harfiandri Damanhuri</i>	90
Segmentation of Palm Oil Leaf Disease using Zoning Feature Extraction <i>Ause Labellapansa, Ana Yulianti and Agus Yuliani</i>	98
Analysis of Economy in the Improvement of Oil Production using Hydraulic Pumping Unit in X Field <i>Muhammad Ariyon, Novia Rita and Tribowo Setiawan</i>	102
Construction Design and Performance of Dry Leaf Shredder with Vertical Rotation for Compost Fertilizer <i>Syawaldi</i>	109
The Impact of Additively Coal Fly Ash toward Compressive Strength and Shear Bond Strength in Drilling Cement G Class <i>Novrianti, Dori Winaldi and Muhammad Ridho Efras</i>	114
Impact of Vibration of Piling Hammer on Soil Deformation: Study Case in Highway Construction Section 5 Pekanbaru-Dumai <i>Firman Syarif, Husnul Kausarian and Dewandra Bagus Eka Putra</i>	120
Combination Playfair Cipher Algorithm and LSB Steganography for Data Text Protection <i>Apri Siswanto, Sri Wahyuni and Yudhi Arta</i>	125
Fire Detection System in Peatland Area using LoRa WAN Communication <i>Evizal Abdul Kadir, Hitoshi Irie and Sri Listia Rosa</i>	130
Forest Fire Monitoring System using WSNs Technology <i>Evizal Abdul Kadir, Sri Listia Rosa and Mahmud Othman</i>	135
Multi Parameter of WSNs Sensor Node for River Water Pollution Monitoring System (Siak River, Riau-Indonesia) <i>Evizal Abdul Kadir, Abdul Syukur, Bahruddin Saad and Sri Listia Rosa</i>	140
Analysis for Gerund Entity Anomalies in Data Modeling <i>Des Suryani, Yudhi Arta and Erdisna</i>	146
The Incidence of Rhinoceros Beetle Outbreak in Public Coconut Plantation in Tanjung Simpang Village, Indragiri Hilir, Riau Province <i>Saripah Ulpah, Nana Sutrisna, Fahroji, Suhendri Saputra and Sri Swastika</i>	151
Mobile Application of Religious Activities for the Great Mosque Islamic Center Rokan Hulu with Push Notification <i>Salhazan Nasution, Arbi Haza Nasution and Fitra Yamita</i>	155
An Augmented Reality Machine Translation Agent <i>Arbi Haza Nasution, Yoze Rizki, Salhazan Nasution and Rafi Muhammad</i>	163
The Community Perception of Traditional Market Services in Pekanbaru City, Riau Province <i>Puji Astuti, Syaifullah Rosadi, Febby Asteriani, Eka Surya Pratiwi and Thalia Amanda Putri</i>	169
Separation of Crude Oil and Its Derivatives Spilled in Seawater by using Cobalt Ferrite Oxide <i>Mohammed A, Samba, Ibrahim Ali Amar, Musa Abuadabba, Mohammed A. Alfroji, Zainab M. Salih and Tomi Erfando</i>	175

Study of Open Space Utilization in Pekanbaru City, Riau Province <i>Mira Hafizhah T., Febby Asteriani, Mardianto and Angelina Rulan S.</i>	182
Application of Augmented Reality as a Multimedia Learning Media: Case Study of Videography <i>Ahmad Zamsuri, Fadli Suandi and Rizki Novendra</i>	188
Green Building Performance Analysis in the Stimi Campus Building <i>Dian Febrianti and Samsunan</i>	194
Towing Service Ordering System based on Android: Study Case - Department of Transportation, Pekanbaru <i>Panji Rachmat Setiawan, Yudhi Arta and Rendi Sutisna</i>	200
Biosurvey of Mercury (Hg), Cadmium (Cd), and Lead (Pb) Contamination in Reclamation Island-Jakarta Bay <i>Salmi Salma, Achmad Sjarmidi and Salman</i>	205
Expert System to Detect Early Depression in Adolescents using DASS 42 <i>Nesi Syafitri, Yudhi Arta, Apri Siswanto and Sonya Parlina Rizki</i>	211
Geotechnics Analysis: Soil Hardness on Stability of Davit Kecil's Weir in Ulu Maras, Kepulauan Anambas, Kepulauan Riau <i>Miftahul Jannah, Dewandra Bagus Eka Putra, Firman Syarif, Joni Triparadi, Nopiyanto and Husnul Kausarian</i>	219
Support for Heritage Tourism Development: The Case of Ombilin Coal Mining Heritage of Sawahlunto, Indonesia <i>Jonny Wongso, Desi Ilona, Zaitul and Bahrul Anif</i>	229
Aerial Photogrammetry and Object-based Image Analysis for Bridge Mapping: A Case Study on Bintan Bridge, Riau Islands, Indonesia <i>Husnul Kausarian, Muhammad Zainuddin Lubis, Primawati, Dewandra Bagus Eka Putra, Adi Suryadi and Batara</i>	237
Monitoring Single Site Verification (SSV) System and Optimization BTS Network based on Android <i>Abdul Syukur, Siti Rahmadhani Sabri and Yudhi Arta</i>	243
Characterization of the Ethnobotany of Riau Province Mascot Flora (<i>Oncosperma tigillarum</i> (Jack) Ridl.) <i>Desti, Fitmawati, Putri Ade Rahma Yulis and Maya Novaliza Isda</i>	250
Effect Stocking Density on Growth and Survival rate of Larval Selais Fish (<i>Kryptopterus lois</i>) Cultured in Recirculation System <i>Agusnimar Muchtar and Rosyadi</i>	254
Development of Safety Plan to Improve OHS (Occupational Health and Safety) Performance for Construction of Dam Supporting Infrastructure based on WBS (Work Breakdown Structure) <i>Aprilia Dhiya Ulhaq, Yusuf Latief and Rossy Army Machfudiyanto</i>	258
Design of Web Login Security System using ElGamal Cryptography <i>Yudhi Arta, Hendra Pratama, Apri Siswanto, Abdul Syukur and Panji Rachmat Setiawan</i>	268
Standard Operational Procedures Development for Government Building's Care and Maintenance Work of Outer Spatial and Housekeeping Component to Improve Work Effectiveness and Efficiency using Risk-based Approach <i>Lasita Khaerani, Yusuf Latief and Rossy Army Machfudiyanto</i>	274

A Novel Correlation on MMP Prediction in CO ₂ -LPG Injection System: A Case Study of Field X in Indonesia <i>Prasandi Abdul Aziz, Hendra Dwimax, Tutuka Ariadji, Steven Chandra, Wijoyo Niti Daton and Ressi Bonti</i>	285
Productivity Analysis of Frac-pack Completion in M Well with Sand Problem Indication and High Permeability Formation <i>Herianto, Prasandi Abdul Aziz, Wijoyo Niti Daton and Steven Chandra</i>	291
Emulsion Treatment using Local Demulsifier from Palm Oil <i>Tomri Erfando and Emre Fathan</i>	299
Designing an IoT Framework for High Valued Crops Farming <i>Domingo Junior P. Ngipol and Thelma D. Palaoag</i>	304
Consideration of the Different Pile Length Due to Soil Stress and Inner Forces of the Nailed-slab Pavement System under Concentric Load <i>Anas Puri, Roza Mildawati and Muhammad Solihin</i>	311
Utilization of Agricultural Waste to Be Bioethanol Sources as a Solvent on Paraffin Wax Crude Oil Issues <i>M. K. Afdhol, F. Hidayat, M. Abdurrahman, H. Z. Lubis, R. K. Wijaya and N. P. Sari</i>	315
The Effect of Regeneration Time of Biomass Activated Carbon using Low Temperature to Reduce Filtration Loss in Water-based Drilling Fluid <i>Nur Hadziqoh, Mursyidah, Arif Rahmadani, Idham Khalid and Hasnah Binti Mohd Zaid</i>	322
Improving the Accuracy of Features Weighted k-Nearest Neighbor using Distance Weight <i>K. U. Syaliman, Ause Labellapansa and Ana Yulianti</i>	326
Predicting of Oil Water Contact Level using Material Balance Modeling of a Multi-tank Reservoir <i>Muslim Abdurrahman, Bop Duana Afireksa, Hyundon Shin and Adi Novriansyah</i>	331
Chip Formation and Shear Plane Angle Analysis on Carbon Steel Drilling using Solid Carbide Tools <i>Rieza Zulrian Aldio</i>	337
A Solution to Increase Natuna D Alpha's Resource Utilization by Cryogenic Distillation: Conceptual Design & Sensitivity Study <i>Wijoyo Niti Daton, Ezra Revolin, Siptian Nugrahawan, Prasandi Abdul Aziz, Tutuka Ariadji, Steven Chandra and J. A. Nainggolan</i>	342
Design of Volcanic Educational-based Natural Tourism at Giriloyo, Wukirsari Village, Imogiri District, Bantul Regency, Yogyakarta-Indonesia <i>Sri Mulyaningsih</i>	349
Four Types of Moral Holistic Values for Revolutionizing the Big Data Analytics in IoT-based Applications <i>Norma Alias</i>	357
AUTHOR INDEX	363

Analysis for Gerund Entity Anomalies in Data Modeling

Des Suryani¹, Yudhi Arta¹ and Erdisna²

¹Department of Informatics Engineering, Universitas Islam Riau, Pekanbaru, Indonesia

²Department of Information System, Universitas Putra Indonesia, Padang, Indonesia
{des.suryani,yudhiarta}@eng.uir.ac.id, erdisna@gmail.com

Keywords: Anomaly, Data Redundancy, Data Inconsistency, Gerund Entity, Entity Relationship Diagram.

Abstract: Data is the most important component of an information system development. Collected data that will be used in future needs should be kept well to make it easy to inquire. The data stored in a database consists of several groups of data relations. These relations should be connected through fields which are unique to the relations linked. In designing database itself, it is very important to note how data is organized and stored to minimize data redundancy. The tools used in depiction of the relationship between tables or entities are Entity Relationship Diagram (ERD) that can have one to one, one to many and many to many relationships. Gerund entity will be formed if the relationship between the entities is many to many. However, the new entity is still a possible anomaly. The reanalysis is needed to be free of anomalies. Gerund entity that still has an anomaly will form a new entity again, which in this case referred to as a sub gerund entity which is a derivative of a gerund entity. The result of a good database design or free of anomalies will increase the optimization of memory usage, consistency and integrity of data.

1 INTRODUCTION

Database is the most important component in the development of Information Systems because it is a place to accommodate and organize all data in the system, so that it can be explored to compile information in various forms (Sutedjo and Oetomo, 2002). The data will be organized in such a way that there is no unnecessary duplication, so that it can be processed or explored quickly and easily to produce the information needed. From several existing database modeling, relational database modeling is still the most used model by various Database Management System (DBMS) software. This is because it is easy to manage data (Barioni et al., 2011; Stonebraker and Moore, 1995).

Entity Relationship Diagram (ERD) is a model diagram that is used as a representation of database structure in which table information includes and the existence of relationships between tables and the form of the relation itself based on existing standard notations (Date, 1977). ERD is used to express the relationship between an entity or object in the form of a table with another entity. In database design, logically is done by transforming an ER diagram developed during conceptual design into a relational database scheme (Ramakrishnan and Gehrke, 2000; Gehrke

and Ramakrishnan, 2003).

Relationships that occur between entities have a type of relationship: one-to-one (1: 1), one-to-many (1: N) and many-to-many (M: N). Based on the many-to-many relationship, it will form a new entity called Gerund Entity or Associative Entity. But in this case, the gerund entity still allows for irregularities (anomalies) in storing data, namely the occurrence of duplication or waste of data. No writer has found a study that examines the anomalies in the gerund entity yet, so that further analysis needs to be done so that the database created is really in accordance with the objectives of the database itself including avoiding or minimizing data redundancy, because the waste of data will result in waste of memory usage and can cause problems in the process of accessing data such as data inconsistency, longer access times and problems in data integrity (Gehrke and Ramakrishnan, 2003; Silberschatz et al., 1997).

2 DATA MODELLING

In describing ER diagrams, it takes the existence of entities, attributes and relationships between entities. Entity is a set of objects in the real world whose existence does not depend on others and has the same

property. Examples of objects in an entity that can be uniquely identified are called entity occurrence. Entities can be something real, such as: Members, Films, Office Branch or abstract (concepts), such as: Rental, Registration, Role. (Kadir, 2000)

Transforming or mapping ER diagrams into relations is a mechanical process, in the sense that the process has certain regularities. To transform from the ER diagram to the relational scheme there are 3 (three) entities that need to be understood, namely (Kroenke and Dolan, 1983; Silberschatz et al., 1997): The document margins must be the following:

- Ordinary entities (regular entities) are entities that are independent of their existence and generally describe real objects in the real world. Ordinary entities are often also called strong entities depicted with four single-striped rectangles.
- Weak entities (week entity) are entities whose existence depends on other entities (usually strong entities). Weak entities are represented by four double-striped rectangles.
- Associative entities (associative entities) or gerund entities are generally formed from many to many relationships between other entities. Associative entities are generally represented by rectangles with parallelograms in them.

Types of relations can be classified as follows:

- one-to-one (1: 1)
- one-to-many (1: M)
- many-to-many (M: N)

Gerund Entity or Associative Entity is formed from many to many relationships. Example: Student entity with the subject matter, Customer entity with the Goods entity and so on.

In logical database design, it can be done by:

- Applying Normalization to a known table structure.
- Directly create the Entity-Relationship (ER model) model.

Logical data model is a source of physical design information. This model provides designers with a vehicle for consideration in designing an efficient database.

Physical database design is the process of producing a description of database implementation on secondary storage, describing storage structures and accessing methods to improve access effectiveness. At this stage, physical design is intended for a particular DBMS. Physical level database design has been associated with database management systems and platforms where the database is implemented (Connolly and Begg, 2005).

Well-organized data can produce good information Organizing data to prevent unnecessary duplication. Data that is organized and correlated each other called as a database, whereas to manage and organize databases that are built in a system, a database management is called a database management system (DBMS). DBMS is software that will determine how data is organized, stored, modified, retrieved, regulated data security mechanisms, and mechanisms for sharing data together (Date, 1983).

2.1 Role of Normalization in Database Design

Normalization is a formal technique that can be used in database design. The main purpose of normalization is to identify the suitability of relationships that support data to meet the needs of a particular company or institution. The role of normalization in this case is in the use of bottom-up approaches and validation techniques. The validation technique is used to check whether the relation structure produced by the ER model is good or not. For more details, it can be shown in figure 1.

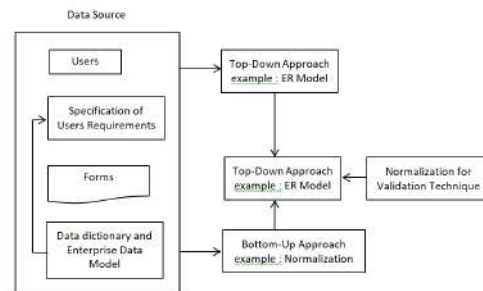


Figure 1: Role of normalization in database design.

In Figure 1 it can be seen that the data source consists of users, specifications of various user requirements, various forms or reports, data dictionary and enterprise data models. Then there is the top-down and bottom-up approach where the approach will result in the design of relations, then the role of normalization on bottom up and validation techniques (Indrajani, 2011).

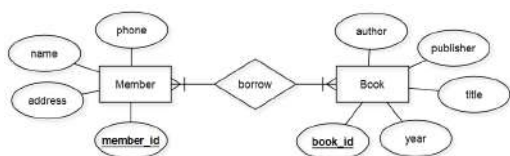


Figure 2: The relationship of many to many between member entity and book entity.

3 RESULT AND DISCUSSION

3.1 Entity Relationship Model

In relational data modelling using the ER diagram can be described in figure 2.

If the entities relationship described as many to many, then it will make a new entity called Gerund Entity or Associative Entity. The field key which connected each entities should be there in the new entity. Then, it continues by more relevant attributes added. It can be seen in figure 3.

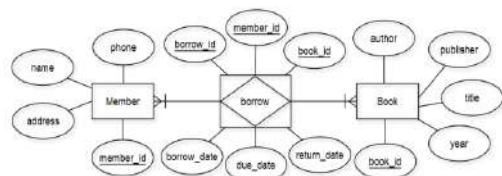


Figure 3: Gerund entity from the relationship of book entity to the member entity.

The diagram in figure 3 can be described more detail in figure 4.

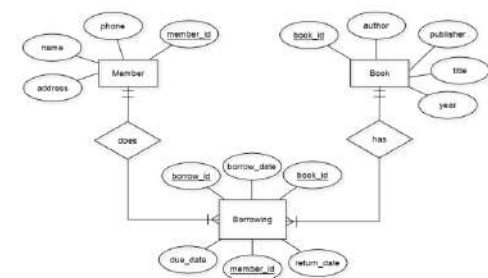


Figure 4: New entity formed (gerund entity).

Based on diagram in figure 4, can be transformed into tables/relations by sample data shown in table 1 to table 3.

The Member relation in the table 1 can be save member data with member_id as primary key. The relation doest not have redudancy data.

The member relation has the form:

Table 1: Member Relation

member_id	name	address	phone
1001	John	Sudirman 10	654534
1002	Dannis	Dt. Setia 15	742345
1003	Betty	M.Yamin 12	653421

Table 2: Book Relation

book_id	title	Author	Publisher	year
C-001	Concepts of Database Management	Philip J.Pratt, Joseph J Adamski	Course Technology	2012
C-002	Principles of Distributed Systems	M. Tamer Ozsu, Patrick Valduriez	Springer	2015
A-002	Fundamental Accounting Principles	John J. Wild, Ken W.Shaw	Mc Grow Hill	2015

Member (member_id, name, address, phone)

The Book relation in the table 1 can be save book data with book_id as primary key. The relation also does not have redudancy data.

The book relation has the form:

Book (book_id, title, author, publisher, year)

Table 3: Borrowing Relation

borrowing_id	member_id	borrow_date	book_id	due_date	return_date
19001	1001	05/02/2019	C-001	05/09/2019	05/08/2019
19001	1001	05/02/2019	C-002	05/10/2019	06/12/2019
19004	1003	06/10/2019	C-002	06/15/2019	06/10/2019

Cardinality relation between member and book relation is many to many so it creates the new table as gerund entity. In this case is called borrowing relation (shown in the table 3). Borrowing relation has borrowing_id as primary key while member_id and book_id is a foreign key.

The borrowing relation has the form:

Borrowing (borrowing_id, member_id, book_id, due_date, return_date)

3.2 Analysis Anomalies of Gerund Entity

Analysis of anomalies in the Borrowing relation by using normalization technique.

Table 4: Borrowing Relation

borrowing_id	member_id	borrow_date	book_id	due_date	return_date
19001	1001	05/02/2019	C-001	05/09/2019	05/08/2019
19001	1001	05/02/2019	C-002	05/10/2019	06/12/2019
19004	1003	06/10/2019	C-002	06/15/2019	06/10/2019

In the Borrowing table as gerund entity. This table has some anomalies. It can be seen a member borrows 2 books at 05/02/2019. In here contain data redundancy in member_id and borrow_date.

- To insert the book of borrowing_id 19004, we must enter member_id and borrow_date repeatedly.
- If we want to change the value of member_id or borrow_date for borrowing_id '19001', we must update the rows of the borrowing_id. If this modification is not carried out on all the appropriate rows of the Borrowing relations, the database will become inconsistent. So that, the borrowing relation should be separated as a new table that called is Borrowing_Detail relation.

The resulting normalization relation have the form:

Borrowing (borrowing_id, member_id, borrow_date)

Borrowing_Detail (borrowing_date, book_id, due_date, return date)

The Borrowing and Borrowing_Detail relations are shown in Table 5 and Table 6. The result of Gerund Entity analysis from Borrowing relation can be shown ER model in Figure 5.

Table 5: Borrowing Relation

borrowing_id	member_id	borrow_date
19001	1001	05/02/2019
19004	1003	06/10/2019

Table 6: Borrowing_Detail Relation

borrowing_id	book_id	due_date	return_date
19001	C-001	05/09/2019	05/08/2019
19001	C-002	05/10/2019	06/12/2019
19004	C-002	06/15/2019	06/10/2019

The establishment of a new entity from the gerund entity above will minimize or eliminate data redundant that can improve optimization of memory usage, consistency and data integrity.

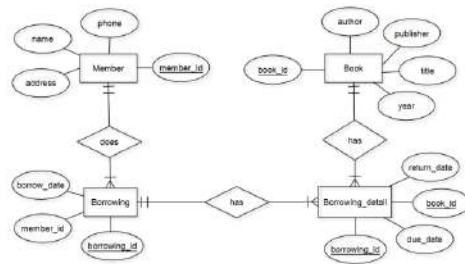


Figure 5: ERD from analysis of Gerund Entity.

4 CONCLUSIONS

Based on the results of the analysis that has been carried out it can be concluded as follows:

In the gerund entity is still possible for an anomaly to occur, so that it will create a new entity again as a derivative of the gerund entity which in this case the author called the sub gerund entity. In the gerund entity, it is necessary to provide a connecting field to the unique sub gerund entity. The establishment of a new entity from the gerund entity will minimize or not even redundant the data so that it can improve optimization of memory usage, consistency and data integrity. For complex databases, anomalous analysis of sub gerund entities can still be continued to ensure that the resulting relations are free from anomalies.

ACKNOWLEDGEMENTS

This research supported by Universitas Islam Riau. Thank you very much for supported by UIR.

REFERENCES

Barioni, M. C. N., dos Santos Kaster, D., Razente, H. L., Traina, A. J., and Júnior, C. T. (2011). Querying multimedia data by similarity in relational dbms. In *Advanced database query systems: techniques, applications and technologies*, pages 323–359. IGI Global.

Connolly, T. M. and Begg, C. E. (2005). *Database systems: a practical approach to design, implementation, and management*. Pearson Education.

Date, C. J. (1977). *An introduction to database systems (Vol. 1)*. Pearson Education India.

Date, C. J. (1983). *n introduction to database systems, Vol. II*. Reading, Mass.

Gehrke, J. and Ramakrishnan, R. (2003). *Database management systems*. McGraw-Hill.

Indrajani, S. M. (2011). *Pengantar dan Sistem Basis Data*. Jakarta: PT Elex Media Komputindo.

- Kadir, A. (2000). *Konsep Dan Tuntunan Praktis Basis Data, Ed. 1, Cet. 2*. ANDI, Yogyakarta.
- Kroenke, D. M. and Dolan, K. (1983). *Database Processing: Fundamentals, Design, Implementation*. author.
- Ramakrishnan, R. and Gehrke, J. (2000). *Database management systems*. McGraw Hill.
- Silberschatz, A., Korth, H. F., and Sudarshan, S. (1997). *Database system concepts (Vol. 4)*. McGraw-Hill New York.
- Stonebraker, M. and Moore, D. (1995). *Object-relational DBMS-the next wave*. Informix Software (Now Part of the IBM Corp. Family), Menlo Park, CA, 14.
- Sutedjo, B. and Oetomo, D. (2002). *Perencanaan dan Pembangunan Sistem Informasi*. Yogyakarta: Andi Offset.



CERTIFICATE

ICOSSET 2019

== as Presenter ==

This Is To Certify That

DES SURYANI

Has Presented At

ICOSSET 2019

(THE 2ND INTERNATIONAL CONFERENCE ON SCIENCE, ENGINEERING, AND TECHNOLOGY)

**"SUSTAINABLE DEVELOPMENT IN DEVELOPING COUNTRY
FOR FACING INDUSTRIAL REVOLUTION 4.0"**

on
September 5-7, 2019

at

SKA Convention and Exhibition Center
Pekanbaru - Indonesia

Organized by Universitas Islam Riau



Rector of UIR

Prof. Dr. H. Syafrinaldi, SH., MCL

General Chair



Dr. Arbi Haza Nasution, M.IT

CO-ORGANIZERS :



UTM

Infrastructure
University