

# Journal of Physics Conference Series

Electrostatics 2019 and Dielectrics 2019

# 1322

VOLUME 1322 - 2019

6-12 April 2019  
Birmingham, UK

**EDITOR**

Dr Paul Rucklidge (p.rucklidge@birmingham.ac.uk)

The open access journal for conference proceedings

[iopscience.org/jpc](http://iopscience.org/jpc)

**IOP Publishing**

PAPER • OPEN ACCESS

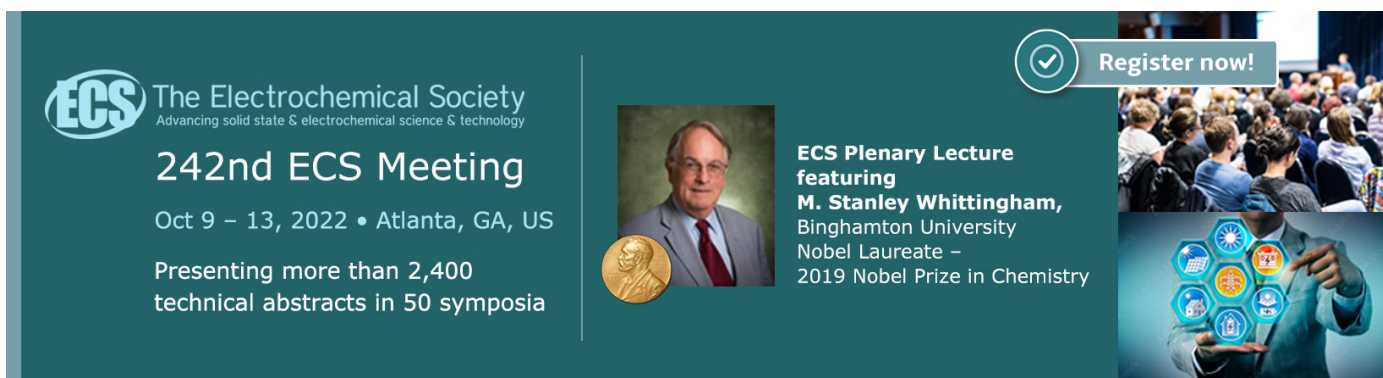
## Forewords from the Head of Committee

To cite this article: 2019 *J. Phys.: Conf. Ser.* **1363** 011001

View the [article online](#) for updates and enhancements.

You may also like

- [Preface](#)
- [4th International Conference on Mechanical, Automotive and Aerospace Engineering](#)
- [Growth performance and yield stability of selected local upland rice genotypes in Buton Utara of Southeast Sulawesi](#)  
G R Sadimantara, B Kadidaa, Suaib et al.



**ECS** The Electrochemical Society  
Advancing solid state & electrochemical science & technology


### 242nd ECS Meeting

Oct 9 – 13, 2022 • Atlanta, GA, US

Presenting more than 2,400 technical abstracts in 50 symposia

**ECS Plenary Lecture**  
featuring  
**M. Stanley Whittingham**,  
Binghamton University  
Nobel Laureate –  
2019 Nobel Prize in Chemistry

 **Register now!**



### Forewords from the Head of Committee

Assalamualaikum Warahmatullahi Wabarakatuh.

We are delighted to introduce the proceedings of the first edition of Workshop Environmental Science, Society and Technology (WESTECH) 2018. The technical program has brought researchers and practitioners around the world to a good forum for discussing, leveraging and developing all scientific and technological aspects that are relevant to digital society. This *Workshop* acquired 215 fullpapers with 15 categories paper with most paper are from Computer Science, Information Technology, Earth Science and also authors from various Countries such as malaysia, thailand, USA and many more.

We hope that the future Workshop Environmental Science, Society and Technology (WESTECH) will be as successful and stimulating, as indicated with the contributions presented in this volume.

Thank you very much for attention.  
Assalamu Alaikum Warahmatullahi Wabarakatuh.

Regard,

Robbi Rahim, M.Kom  
Chairman



# Table of contents

Volume 1363

2019

◀ Previous issue    Next issue ▶

**The 1st Workshop on Environmental Science, Society, and Technology 8 December 2018, Medan, North Sumatera, Indonesia**

Accepted papers received: 07 October 2019

Published online: 14 November 2019

Open all abstracts

## Preface

**OPEN ACCESS** 011001

Forewords from the Head of Committee

+ Open abstract  View article  PDF

**OPEN ACCESS** 011002

Peer review statement

+ Open abstract  View article  PDF

## Papers

### Computer Science

**OPEN ACCESS** 012001

DBSCAN algorithm: twitter text clustering of trend topic pilkada pekanbaru

Mustakim, Reza Nurul Gayatri Indah, Rice Novita, Oktaf Brillian Kharisma, Rian Vebrianto, Suwanto Sanjaya, Hasbullah, Tuti Andriani, Wardani Purnama Sari, Yulia Novita *et al*

+ Open abstract  View article  PDF

**OPEN ACCESS** 012002

Development of location tracking system via short message service (SMS) based on GPS unblox neo-6m and sim 800l module

Oktaf Brillian Kharisma, A. Abdillah, Mustakim, Rian Vebrianto, Rice Novita, Hasbullah, Irwanti Yulia Novita, Zaitun, Arwis Nazir *et al*

[+ Open abstract](#) [View article](#) [PDF](#)

---

## Economic Growth and Development

**OPEN ACCESS** 012003

Environmental risk assessment on ship repair work at cilegon national shipyard company

Rachmat Ashari, Emil Budianto and Herdis Herdiansyah

[+ Open abstract](#) [View article](#) [PDF](#)

---

## Environment

**OPEN ACCESS** 012004

The Role of River Embankment Workers in River Conservation in Surakarta City

Samsul Hadi, Chatarina Muryani and Sigit Santosa

[+ Open abstract](#) [View article](#) [PDF](#)

---

## Food, Biology and Nutrition Research

**OPEN ACCESS** 012005

Conservation Strategy of a vulnerable species of 'Rosewood' (*Dalbergia latifolia Roxb*) by Insect Pollinator Identification

Janis Damaiyani and Heri Prabowo

[+ Open abstract](#) [View article](#) [PDF](#)

**OPEN ACCESS** 012006

Evaluation of Kemiri Sunan (*Reutealis trisperma* Blanco) Seed Oil Nanoemulsion as insecticide against *Planococcus minor* (Hemiptera: Pseudococcidae)

Heri Prabowo and Janis Damaiyani

[+ Open abstract](#) [View article](#) [PDF](#)

**OPEN ACCESS** 012007

Resistant starch content, pasting properties, and morphology of taro (*Colocasia esculenta* L. Schott) flour modified by heat-moisture treatment

Daniel Santoso, Ata Aditya Wardana and Ingrid S. Surono

[+ Open abstract](#) [View article](#) [PDF](#)

**OPEN ACCESS** 012008

Resistant starch content, pasting properties, and structure of modified taro (*Colocasia esculenta* L. Schott) starch granule by steam cooking

Ata Aditya Wardana, Ingrid S. Surono and Herdis Herdiansyah

[+ Open abstract](#) [View article](#) [PDF](#)

This site uses cookies. By continuing to use this site you agree to our use of cookies. To find out more, see our Privacy and Cookies policy.



**OPEN ACCESS** 012009  
Retention of albumin in Indonesian shortfin eel meat (*Anguilla bicolor*) by freeze-drying encapsulation using maltodextrin and gum Arabic as coating materials

R D S Rawendra, H Kosasih and D Lo

[+ Open abstract](#) [View article](#) [PDF](#)

**OPEN ACCESS** 012010  
Nutrition Evaluation of Indonesian Shortfin Eel (*Anguilla bicolor*) Meat for Functional Food Development

Harvey Febrianta and Reynetha D.S. Rawendra

[+ Open abstract](#) [View article](#) [PDF](#)

## Geology and Earth Science

**OPEN ACCESS** 012011  
The study of laminate concrete between geopolymers and conventional

Mochammad Qomaruddin and Sudarno

[+ Open abstract](#) [View article](#) [PDF](#)

**OPEN ACCESS** 012012  
Geotourism Of Banyuputih Catchment Area, Mount Ijen, East Java, Indonesia

Achmad Djumarma Wirakusumah, Dodid Murdohardono and Diah Rosiani

[+ Open abstract](#) [View article](#) [PDF](#)

**OPEN ACCESS** 012013  
Fracture Analysis of Uranium-Bearing Rock in Eko-Remaja Exploration Tunnel at Depth 50-200 Meters, Kalan, West Kalimantan

Adi Gunawan Muhammad, Roni Cahya Saputra and Heri Syaeful

[+ Open abstract](#) [View article](#) [PDF](#)

**OPEN ACCESS** 012014  
Burial History, Thermal Maturation, and Source Rock Evaluation of Ngimbang Formation in East Java Basin

Aditya Pradono and Dadali Rakasiwi

[+ Open abstract](#) [View article](#) [PDF](#)

**OPEN ACCESS** 012015  
Magnetics anomalies by evolution of Mount Telaga Pano, Mount Sahki and Mount Omure, see North Maluku. Analyses of phenocrysts chemical composition



Adzkia Noerma Arifa and I Gusti Bagus Eddy Sucipta

[+ Open abstract](#) [View article](#) [PDF](#)

---

**OPEN ACCESS**

012016

Landslide Disaster Potential In Warungkiara District, Sukabumi Regency, Based On The Analysis Of Quantitative Geomorphology And Land Use Data

Ahmad Reza, Mi'raj Maulana and dan Raisya NurAzizah Hilman

[+ Open abstract](#) [View article](#) [PDF](#)

---

**OPEN ACCESS**

012017

Risk Analysis of Sinabung Volcano Eruption in Karo, North Sumatera, Indonesia

Aldo Prayoga, Luciana Maorine Wita and Pinandhito Vernon

[+ Open abstract](#) [View article](#) [PDF](#)

---

**OPEN ACCESS**

012018

Hydrochemical Study in Determining Characteristic Of Fluid And Geothermal Reservoir In Sanggabuana Mountain Area And Its Surrounding, Citeureup, Bogor, West Java

Anis Millayanti, Wahyu Perdana, Wildani Supriadi, Agus Didit Haryanto and Johanes Hutabarat

[+ Open abstract](#) [View article](#) [PDF](#)

---

**OPEN ACCESS**

012019

Understanding Mechanics of Fold-Thrust-Belt through Sandbox Modelling

Benyamin Sapiie, Meli Hadiana and Terry A. Furqan

[+ Open abstract](#) [View article](#) [PDF](#)

---

**OPEN ACCESS**

012020

Cement Grouting Method for Increasing the Cone Value of Slopes at Semarang Multi Event Circuit, Mijen, Semarang

Brenanto Tsaqofa Widodo, Muhammad Alam Satria and Michael Silaen

[+ Open abstract](#) [View article](#) [PDF](#)

---

**OPEN ACCESS**

012021

The Existence of Tin Placer Relation With Tin Belt In Kundur Waters Area Riau archipelago Province

D Setiady, I Syafri and N C D Aryanto

[+ Open abstract](#) [View article](#) [PDF](#)

---

**OPEN ACCESS**

012022

This site uses cookies. By continuing to use this site you agree to our use of cookies. To find out more, see our Privacy and Cookies policy.



## Earthquake Hazard Perception Of The Education Stakeholders In Sukabumi Regency, West Java, Indonesia

Dicky Muslim, Zufialdi Zakaria, Irvan Sophian, Evi Haerani and Satoshi Yamaoka

[+ Open abstract](#) [View article](#) [PDF](#)

---

### OPEN ACCESS

012023

## Fracture Zone Analysis Based On Property Electrical Borehole Image Log And Geomechanic Geothermal Field Solok, West Sumatra

Friska Agustin, Chalid Idham Abdullah, Merandy Palabiran and Asti Sulastri

[+ Open abstract](#) [View article](#) [PDF](#)

---

### OPEN ACCESS

012024

## Diversity Of Benthic Foraminifera Of Core 'A' As A Marine Environment Indicator In The Waters Of Jepara, Central Java

Dwi Nugraha Wira Kusuma, Dhanu Elfitra, Lia, Winantris and Siti Mulia Nurul Aswad

[+ Open abstract](#) [View article](#) [PDF](#)

---

### OPEN ACCESS

012025

## Oil-Source Rock Correlation Of Oil Seepage And Rock Samples Collected From The Cibulakan Formation At Palimanan Area, West Java

Edi Wahyu Jatmiko and Praptisih Kamtono

[+ Open abstract](#) [View article](#) [PDF](#)

---

### OPEN ACCESS

012026

## Seismic Interpretation and Depositional Model of Kais-Lower Klasafet Reservoirs in Walio Area of Kepala Burung PSC, Salawati Basin, West Papua, Indonesia

Eli Silalahi, Yulia Putri, Ricky Sitinjak, Donny Miraza and Michael Sompie Tsania Ozza

[+ Open abstract](#) [View article](#) [PDF](#)

---

### OPEN ACCESS

012027

## Geology Study and Granite Characteristics in Penandingan Area, Tanjung Sakti Pumi, Lahat, South Sumatra

Etra Marleta Oktapiani and Endang Wiwik Dyahastusti

[+ Open abstract](#) [View article](#) [PDF](#)

---

### OPEN ACCESS

012028

## Geohazard Mitigation Based on Local Wisdom for Limestone Mining Site in Padalarang Area of West Java

This site uses cookies. By continuing to use this site, you agree to our use of cookies. To find out more, see our Privacy and Cookies policy.





[+ Open abstract](#) [View article](#) [PDF](#)

---

**OPEN ACCESS**

012029

Structure System and It Controls to Mineralization of Primary Tin Deposit, Airdibi Area, Jebus Subdistrict, West Bangka, Bangka and Belitung

Faiz Akbar Prihutama, Muhammad Syarifuddin, Angger Imas Asshidiqie Faric Ryandhika,

Suprpto Angga Widya Yogatama and Reza Aviandono

[+ Open abstract](#) [View article](#) [PDF](#)

---

**OPEN ACCESS**

012030

Temporal change of Barujari Volcano magmatic process: Inferred from petrological study of erupted products since AD 1944

G Abdul-Jabbar, H Rachmat and M Nakagawa

[+ Open abstract](#) [View article](#) [PDF](#)

---

**OPEN ACCESS**

012031

Probabilistic Analysis of the Laharic Hazard Assessment on Experimental Power Reactor, Puspipetek Area, Serpong

I Gde Sukadana, Yarianto Sugeng Budi Susilo, Anjar Heriwaseso and Euis Etty Alhakim

[+ Open abstract](#) [View article](#) [PDF](#)

---

**OPEN ACCESS**

012032

Laser Particle Size Analysis (LPSA) approachment for Depositional Environment and Hydraulic Flow Unit (HFU) determination in Keutapang Formation, Rantau Field (North Sumatera Basin) and Air Benakat Formation, Tempino Field (South Sumatera Basin)

Johanes Maunda Pinem and Abdurahman Fajar Muslim

[+ Open abstract](#) [View article](#) [PDF](#)

---

**OPEN ACCESS**

012033

Geological Aspect and Hydrocarbon Potential in West Timor

J Wahyudiono and N Novelyarisyanti

[+ Open abstract](#) [View article](#) [PDF](#)

---

**OPEN ACCESS**

012034

Integrated of Static and Dynamic Modeling Workflow for Belimbing Oil Field Development of Talangakar Sandstone Reservoir, South Sumatra Basin

Karolina Bala Gadi, Grace Stephani, Ricky Wicaksono, Abdurahman F. Muslim and Yoga Wismoyo

[+ Open abstract](#) [View article](#) [PDF](#)

This site uses cookies. By continuing to use this site you agree to our use of cookies. To find out more, see our Privacy and Cookies policy.



**OPEN ACCESS**

012035

### Facies and Architectural Element Analysis of Braided Fluvial Succession: The Tertiary Sawah tambang Sandstone, Sawahlunto, Indonesia

U. K. Gusti and B.K. Susilo

[+ Open abstract](#) [View article](#) [PDF](#)**OPEN ACCESS**

012036

### The Usage of Coal Combustion (fly) Ash as Mitigation Method to Control Soil Erosion and Water Pollution: A state knowledge review

Kuncaraningrat Edi Yoga, Euginia Gloria Febrina and Fauzan Aditya Haqie

[+ Open abstract](#) [View article](#) [PDF](#)**OPEN ACCESS**

012037

### Geology Controls Grade Variance at Grasberg Cu-Au Porphyry Deposit, Papua-Indonesia

J Sirait, L C Prasetyo and N Prasetiyo

[+ Open abstract](#) [View article](#) [PDF](#)**OPEN ACCESS**

012038

### Quaternary Sediment Facies Distribution in Meandering River Environment: Study Case at The Kampar River, Rumbio Area and Surroundings, Riau Province

Muhammad Revanda, Yuniarti Yuskar, Dewandra Bagus Eka Putra and Dilla Permata Sari

[+ Open abstract](#) [View article](#) [PDF](#)**OPEN ACCESS**

012039

### Lithology Effect On Total Organic Content, Maturity Level And Depositional Environment Of Pemaluan Formation as a Shale Gas Bearing Formation, Kutai Basin, East Kalimantan

N Novelyarisyanti and Y Iskandar

[+ Open abstract](#) [View article](#) [PDF](#)**OPEN ACCESS**

012040

### Identification Fault Characteristic in Southern Sulawesi by Focal Mechanism

Muhammad Altin Massinai, Muhammad Fawzy Ismullah Massinai, Atika Kurniati and Erfan Syamsuddin

[+ Open abstract](#) [View article](#) [PDF](#)**OPEN ACCESS**

012041

### Crystal size distribution (CSD) of plagioclase phenocryst-microphenocryst and the calculation of crystal resident times in the continuous central eruption sequences of Mount Lasem, Central Java, Indonesia

This site uses cookies. By continuing to use this site you agree to our use of cookies. To find out more, see our Privacy and Cookies policy.



[+ Open abstract](#) [View article](#) [PDF](#)

---

**OPEN ACCESS**

012042

Geochemical Approach to Reveal The Genetic Occurrence of Gibbsite, Relative to The Parent Rock Type in Lateritic Bauxites

R D Nugraheni and D Sunjaya

[+ Open abstract](#) [View article](#) [PDF](#)

---

**OPEN ACCESS**

012043

Application of Specific Capacity In Monitoring Groundwater Well : A Case Study of Kota Agung Groundwater Well

S Aryawicaksona and A S Muhammad

[+ Open abstract](#) [View article](#) [PDF](#)

---

**OPEN ACCESS**

012044

Analysis Rock Mass Rating (RMR) Elevation Inlet Diversion Tunel Luewikeris

Den Habib Ibnu Rahman and Sofyan Rachman

[+ Open abstract](#) [View article](#) [PDF](#)

---

**OPEN ACCESS**

012045

Application of Geostatistics for Cleat Data Validation in Sungai Lilin, Musi Banyuasin Region, South Sumatra

Stevanus Nalendra Jati, Idarwati, Ildo M. Putra and FadlanAtmaja Nursiwan

[+ Open abstract](#) [View article](#) [PDF](#)

---

**OPEN ACCESS**

012046

Risk Analysis of Slope Stability Open Mine With Probability Method PT. Timah (Persero) TBK Batubesi Area, Damar, East Belitung

Teguh Samudera Paramesywara and Budhi Setiawan

[+ Open abstract](#) [View article](#) [PDF](#)

---

**OPEN ACCESS**

012047

Identification Of Sinter Silica Evolutionary Manifestation As A Bicarbonate Travertine Based On Isotope  $^{18}\text{O}$  And  $^2\text{H}$  Review Of Local Meteoric Water Line Curves As Determinant Of Outflow Fluid Reservoir In Cisolok-Cisukarame Geothermal System

Tubagus Gleamen, Ahmad Lutfi, Agus Didit and Farhan Rijal Giffari

[+ Open abstract](#) [View article](#) [PDF](#)

---

This site uses cookies. By continuing to use this site you agree to our use of cookies. To find out more, see our Privacy and Cookies policy.

012048

## Volcanostratigraphy of Batukuwung-Parakasak Geothermal Area, Serang Regency, West Java

Untung Sumotarto, F. Hendrasto and W. Triadi

[+ Open abstract](#) [View article](#) [PDF](#)

---

**OPEN ACCESS**

012049

Application of microwave remote sensing polarimetric synthetic aperture radar for the new geological map of peatland distribution, humidity and its sample properties in Regency of Siak, Riau Province, Indonesia

Husnul Kausarian, Josaphat Tetuko Sri Sumantyo, Ayaka Takahashi, Joko Widodo and Yuta Izumi

[+ Open abstract](#) [View article](#) [PDF](#)

---

**OPEN ACCESS**

012050

Hydrogeology And Hydrochemistry Of Shallow Groundwater And Surface Water And Potential Water Pollution In Gadung District, Buol, Central Sulawesi

Zikri Yanti, Doni Prakasa Eka Putra and Heru Hendrayana

[+ Open abstract](#) [View article](#) [PDF](#)

---

**OPEN ACCESS**

012051

Ecotourism Potential of Batu Gelap Cave, Kutai Kartanegara, East Kalimantan

Koeshadi Sasmito, Agus Wahyudi, Syamsidar Sutan and Fajar Alam

[+ Open abstract](#) [View article](#) [PDF](#)

---

**OPEN ACCESS**

012052

Intellectual property rights protection of Mandar coconut oil through geographical indications

Erlika Sari, Hasbir Paserangi, Marwah, Achmad Zulfikar, Irmawati and Erwin Rasyid

[+ Open abstract](#) [View article](#) [PDF](#)

---

**OPEN ACCESS**

012053

Development of Community-Based Ecotourism in Ngargoyoso District, Karanganyar Regency, Central Java Province

Chatarina Muryani, Sigit Santosa and Singgih Prihadi

[+ Open abstract](#) [View article](#) [PDF](#)

---

**OPEN ACCESS**

012054

The Strengthening of Social Capital in Flood Disaster Preparedness in Jebres District, Surakarta

D Wulandari, C Muryani and P Karyanto

This site uses cookies. By continuing to use this site you agree to our use of cookies. To find out more, see our Privacy and Cookies policy.

[+ Open abstract](#) [View article](#) [PDF](#)



**Information Technology****OPEN ACCESS**

012055

Public services optimizing through the communication and information technology application of local governments as an effort to form environmentally friendly smart city branding

Aat Ruchiat Nugraha, Priyo Subekti, Rosnandar Romli and Evi Novianti

[+ Open abstract](#) [View article](#) [PDF](#)

**OPEN ACCESS**

012056

Implementation of Fuzzy *Mamdani* Logic Method for Student Drop Out Status Analytics

Mohamad Irfan, Cecep Nurul Alam and Dea Tresna

[+ Open abstract](#) [View article](#) [PDF](#)

**OPEN ACCESS**

012057

Variable Selection to Determine Majors of Student using K-Nearest Neighbor and Naïve Bayes Classifier Algorithm

Mustakim, Reysa Hastarimasuci, Petir Papilo, Zarkasih, Zaitun and Alwis Nazir

[+ Open abstract](#) [View article](#) [PDF](#)

**OPEN ACCESS**

012058

Use of ladder snake media in improving student learning outcomes in mathematics learning in elementary school

Dudu Suhandi Saputra, Yuyu Yuliati and Reza Rachmadtullah

[+ Open abstract](#) [View article](#) [PDF](#)

**OPEN ACCESS**

012059

Applying C-FDT as Making Decision for the Content of SEO Media Online

Erlin Windia Ambarsari, Yulianingsih, Rendi Prasetya, Wahyu Nur Cholifah and Robbi Rahim

[+ Open abstract](#) [View article](#) [PDF](#)

**OPEN ACCESS**

012060

Integrating Technology And Media In Learning Process

I Ketut Sudarsana, Indrya Mulyaningsih, Nuning Kurniasih, Haimah, Yunita Oktavia Wulandari, Herdi Ramon, Erwinsyah Satria, Kundharu Saddhono, Fauziah Nasution and Dahlan Abdullah

[+ Open abstract](#) [View article](#) [PDF](#)

**OPEN ACCESS**

012061

Technology Application In Education And Learning Process

This site uses cookies. By continuing to use this site you agree to our use of cookies. To find out more, see our Privacy and Cookies policy.





[+ Open abstract](#) [View article](#) [PDF](#)

**OPEN ACCESS**

012068

### Prototype of Learning Applications for Modern Cryptographic Techniques Using RC4 Algorithms to Support Computer Security Courses

Muhammad Iqbal, Nasrul Nazar, Cut Ita Erliana, Defi Irwansyah, Nuning Kurniasih, Edi Susilo, Akbar Iskandar, Rini Suryani, Supriyono, Sudarmaji *et al*

[+ Open abstract](#) [View article](#) [PDF](#)

**OPEN ACCESS**

012069

### Expert System to Diagnosing Heart Attack Disease Using Certainty Factor Method

Muhammad Iqbal, Nurul Fatia, Sara Surya, Evi Susilawati, Parwito, Zefri Azharman, Anita Dewi Moelyaningrum, Rinandita Wikansari, Andri Nugraha, Arfriani Maifizar *et al*

[+ Open abstract](#) [View article](#) [PDF](#)

**OPEN ACCESS**

012070

### Body Height Detection System Using Russel & Rao Method

Dahlan Abdullah, Cut Ita Erliana, Defi Irwansyah, Sri Rahayu, Nurul Khairani, Anita Dewi Moelyaningrum, Rian Vebrianto, Ninuk Wiliani, Arfriani Maifizar, Nur Mukarromah *et al*

[+ Open abstract](#) [View article](#) [PDF](#)

**OPEN ACCESS**

012071

### Efforts to Improve Service Quality with Fuzzy Approach and Service Quality Methods at Dunia Barusa Inc.

Defi Irwansyah, Dina, Cut Ita Erliana, Ayu Esteka Sari, Deky Hamdani, Karona Cahya Susena, Tito Irwanto, Asmara Indahingwati, Nur Aida, Tatas Ridho Nugroho *et al*

[+ Open abstract](#) [View article](#) [PDF](#)

**OPEN ACCESS**

012072

### Improvement Suggestion Performance of Blowing Machine Line 4 with Total Productive Maintenance (TPM) Method at PT. Coca-Cola Amatil Indonesia Medan Unit

Defi Irwansyah, M Reza Fahlevi Harahap, Cut Ita Erliana, Nurintan Asyiah Siregar, Jamil Afrianto, Nurmawati, Dwi Irawan, Rianti Setyawasih, Meiffa Herfianti, Mimi Kurnia Nengsih *et al*

[+ Open abstract](#) [View article](#) [PDF](#)

**OPEN ACCESS**

012073

### HFLTS-TOPSIS With Pseudo-distance in Determining The Best Lecturers

Dahlan Abdullah, H Hartono, Kundharu Saddhono, Nuning Kurniasih, Akbar Iskandar, Dian Rianita, Purwarno, Rini Suryani, and G. Dwi Nugroho, Satria, Tato Nuryanto *et al*

This site uses cookies. By continuing to use this site you agree to our use of cookies. To find out more, see

[Our Privacy and Cookie Policy](#)



[+ Open abstract](#) [View article](#) [PDF](#)

---

**OPEN ACCESS**

012074

### Lecture Scheduling System Using Welch Powell Graph Coloring Algorithm in Informatics Engineering Departement of Universitas Malikussaleh

Dahlan Abdullah, Nurdin, Marsali Yaton, Heri Sujatmiko, Sepyan Purnama Kristanto, Hendra Nazmi, Irma Lisa Sridanti, Andang Suhendi, Abdurrozzaq Hasibuan, Renny Kurniawati *et al*

[+ Open abstract](#) [View article](#) [PDF](#)

---

**OPEN ACCESS**

012075

### The Implementation of Backtracking Algorithm on Crossword Puzzle Games Based on Android

Nurdin, Rizki Azhar, Dahlan Abdullah, Cut Ita Erliana, Odi Nurdiawan, Arif Rinaldi Dikananda, Ade Rizki Rinaldi, Dadang Sudrajat, Elva Susanti, Abdurrozzaq Hasibuan *et al*

[+ Open abstract](#) [View article](#) [PDF](#)

---

**OPEN ACCESS**

012076

### Detection System of Aceh Ethnic Music Types Based On Sound Using the Hubbard Stratonovich Transformation Method

Nurdin, Dahlan Abdullah, One Charita Putri, Erwinsyah Satria, Dian Rianita, Febri Liantoni, Yuliwati, Asri Wijayanti, Sujinah, Madinah *et al*

[+ Open abstract](#) [View article](#) [PDF](#)

---

**OPEN ACCESS**

012077

### Sms Encryption Application Using 3Des (Triple Data Encryption Standard) Algorithm Based on Android

Nurdin, Dahlan Abdullah, Widia Fatimah, R Ratnadewi, Nuning Kurniasih, Dian Rianita, Berliana Kusuma Riasti, Edi Sofian, Very Karnadi, Febri Liantoni *et al*

[+ Open abstract](#) [View article](#) [PDF](#)

---

**OPEN ACCESS**

012078

### Designing the Application of Security Text Messages Into Audio Files Using Data Encryption Standard (DES) Algorithms Using the End Of File (EOF) Method

A M H Pardede, Anggi Pramana, Muhammad Zarlis, Akbar Iskandar, Rosida Tiuma Manurung, S Sriadhi, Citra Kurniawan, Abdurrozzaq Hasibuan, Nurintan Asyiah Siregar, Ayu Esteka Sari *et al*

[+ Open abstract](#) [View article](#) [PDF](#)

---

**OPEN ACCESS**

012079

This site uses cookies. By continuing to use this site you agree to our use of cookies. To find out more, see our Privacy and Cookies policy. [Implementation of Data Mining to Classify the Consumer's Complaints of Electricity Usage Based on Consumer's Locations Using Clustering Method](#)





A M H Pardede, Yudianta Br Sembiring, Akbar Iskandar, Dyah Retno Pitasari, S Sriadhi, Dian Rianita, Muhammad Arifin, Mersy Yoslin Ririhena, Nurintan Asyiah Siregar, Supriyono *et al*

[+](#) Open abstract [View article](#) [PDF](#)

---

**OPEN ACCESS**

012080

### Application of Message Security Application Using Vigenere Cipher Algorithm Utilizing One Time Pad (OTP) Algorithm as a Key Generator

A M H Pardede, Lorena Perbina Br Sitepu, Muhammad Zarlis, Tulus, Akbar Iskandar, S Sriadhi, Rosida Tiurma Manurung, Nurintan Asyiah Siregar, Ayu Esteka Sari, Sri Yunawati *et al*

[+](#) Open abstract [View article](#) [PDF](#)

---

**OPEN ACCESS**

012081

### Decision Support System for Deciding Eligible Journals to be Published in Majalah Kedokteran Nusantara Using the Fuzzy Logic Method

A M H Pardede, Silvia Lestari Sirait, Muhammad Zarlis, Tulus, Dian Rianita, Rosida Tiurma Manurung, Eko Sumartono, Kundharu Saddhono, Arlis Dewi Kuraesin, Nuning Kurniasih *et al*

[+](#) Open abstract [View article](#) [PDF](#)

---

**OPEN ACCESS**

012082

### Implementation of String Matching Algorithm in Customer Data PT. PLN (*Persero*) Krueng Geukueh District

Oris Krianto Sulaiman, Aldy Waridha, Dian Hendrawan, Susi Ekalestari, Purwarno, Andang Suhendi, Sri Wulan, Pardi, Devi Pratiwy, Zulfan Sahri *et al*

[+](#) Open abstract [View article](#) [PDF](#)

---

**OPEN ACCESS**

012083

### Grouping 2 Hour Load Data Substation Using Hierarchical Clustering

Yusmartato, Indra Gunawan, Murni Sari Rahayu, Dedi Kusbiantoro, Surya Dharma, Anuar Sadat, Rachmat Rizaldi, Supriadi, Zenni Riana, Dedy Irawan Nst *et al*

[+](#) Open abstract [View article](#) [PDF](#)

---

**OPEN ACCESS**

012084

### Motivation And Learning Outcomes Through The Internet Of Things; Learning In Pesantren

Agus Syakroni, Zamroni, Chusnul Muali, Hasan Baharun, Muh Zainuddin Sunarto, Bisri Musthofa and Muallim Wijaya

[+](#) Open abstract [View article](#) [PDF](#)

---

**OPEN ACCESS** cookies. By continuing to use this site you agree to our use of cookies. To find out more, see [our Privacy and Cookies Policy](#)

012085

### Utilization of Local Fly Ash for Producing Self-Compacting Concrete



Yulius Rief Alkhaly and M. Kabir Ihsan

[+ Open abstract](#) [View article](#) [PDF](#)

**Mathematics**

**OPEN ACCESS** 012086

Implementation QSGS iteration applied to fractional diffusion equation

A Sunarto and J Sulaiman

[+ Open abstract](#) [View article](#) [PDF](#)

**OPEN ACCESS** 012087

Functional Data Analysis: An Initiative Approach for Hyperspectral Data

S Sugianto, M Rusdi and Syakur

[+ Open abstract](#) [View article](#) [PDF](#)

**OPEN ACCESS** 012088

Students' Errors in solving the PISA mathematics problem using Newman's error categories

S Ahyan, Turmudi and S Prabawanto

[+ Open abstract](#) [View article](#) [PDF](#)

**Physical Environment**

**OPEN ACCESS** 012089

The analysis of mortar concrete with the variety of sands in jepara (keling sand, bangsri sand) using strong pressure method

Yayan Adi Saputro, Rachmat Mudiyono and Antonius

[+ Open abstract](#) [View article](#) [PDF](#)

**OPEN ACCESS** 012090

Local Potential of West Kalimantan's Mangrove Ecosystem as A Study Material in Biology Education at Mangrove Area School

Mendala and I G P Suryadarma

[+ Open abstract](#) [View article](#) [PDF](#)

**OPEN ACCESS** 012091

The formulation Robusta coffee bark Jember Indonesia for charcoal Briquettes as alternative energy : The comparison organic starch adhesive and anorganic adhesive

Anita Dewi Moelyaningrum, Honest Dody Molassy and Intan Kartika Setyowati

[+ Open abstract](#) [View article](#) [PDF](#)

This site uses cookies. By continuing to use this site you agree to our use of cookies. To find out more, see our Privacy and Cookies policy.



---

**Quality of Life**

---

**OPEN ACCESS**

012092

Formalin and Borax Qualitative Test Use Natural Indicator

Nanang Rahman

[+ Open abstract](#) [View article](#) [PDF](#)

---

**OPEN ACCESS**

012093

Analysis of P53 Gene Mrna Expression and Caspase-3 Levels As Pre-Cervical Cancer Animals Model in Wistar Rat With Diethylstilbestrol-Induced

S. Rahayu, Rosdiana Natzird, Muh Nasrum Massie, Syahrul Rauf, Dondin Sujuti, Mochammad Hatta, Nurpuji Astuti A. Taslim, Muh.Husni Cangara, Ilhamjaya Patellongi and Khairuddin Djawad

[+ Open abstract](#) [View article](#) [PDF](#)

---

**Sustainable Built Environment**

---

**OPEN ACCESS**

012094

Mangrove diversity and sustainability in karangsong village of indramayu regency, west java

Kirstie Imelda Majesty, Mahawan Karuniasa and Herdis Herdiansyah

[+ Open abstract](#) [View article](#) [PDF](#)

---

**OPEN ACCESS**

012095

Service Quality Improvement by Using the Quality Function Deployment (QFD) Method at the Government General Hospital

Abdurrozzaq Hasibuan, Luthfi Parinduri, Oris Krianto Sulaiman, Abdul Rahman Suleman,

Adek Khadijatul Z Harahap, Masnilam Hasibuan, Frits Gerit John Rupilele, Janner Simarmata, Nuning Kurniasih, GS Achmad Daengs *et al*[+ Open abstract](#) [View article](#) [PDF](#)

---

**OPEN ACCESS**

012096

The Empty Palm Oil Fruit Bunch as the Potential Source of Biomass in Furfural Production in Indonesia: Preliminary Process Design and Environmental Perspective

K I Majesty and H Herdiansyah

[+ Open abstract](#) [View article](#) [PDF](#)

---

**OPEN ACCESS**

012097

Supply Chain Management to Optimize One Stop Fish Trading

Rina Fiati and Anastasya Latubessy

[+ Open abstract](#) [View article](#) [PDF](#)

This site uses cookies. By continuing to use this site you agree to our use of cookies. To find out more, see our Privacy and Cookies policy.



**OPEN ACCESS**

012098

### Community Understanding of Sustainable Communal Cattleshed Management

S Muhammad Febriman, Tri Edhi Budhi Soesilo and Evi Frimawaty

[+ Open abstract](#) [View article](#) [PDF](#)

**OPEN ACCESS**

012099

### Conflict of Jakarta Bay Reclamation: Government Knowledge and Respond

Elok Faiqotul Mutia, Herdis Herdiansyah and Joko Tri Haryanto

[+ Open abstract](#) [View article](#) [PDF](#)

## Urban Design

**OPEN ACCESS**

012100

### Designing the Mitigation Model of Urban Sprawl Potential Impact in Suburban Denpasar, Bali

Putu Indra Christiawan

[+ Open abstract](#) [View article](#) [PDF](#)

## JOURNAL LINKS

[Journal home](#)

[Journal Scope](#)

[Information for organizers](#)

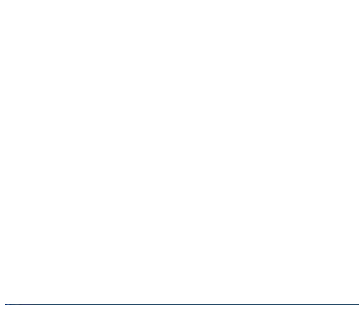
[Information for authors](#)

[Contact us](#)

[Reprint services from Curran Associates](#)

This site uses cookies. By continuing to use this site you agree to our use of cookies. To find out more, see our Privacy and Cookies policy.





This site uses cookies. By continuing to use this site you agree to our use of cookies. To find out more, see our Privacy and Cookies policy.



PAPER • OPEN ACCESS

## Application of microwave remote sensing polarimetric synthetic aperture radar for the new geological map of peatland distribution, humidity and its sample properties in Regency of Siak, Riau Province, Indonesia

To cite this article: Husnul Kausarian *et al* 2019 *J. Phys.: Conf. Ser.* **1363** 012049

View the [article online](#) for updates and enhancements.

You may also like

- [Green technology as a strategy in managing the black spots in Siak Highway, Indonesia](#)  
A Sandhyavitri, J Wira and A Martin
- [A short note on Siak River, Sumatra, Indonesia](#)  
O Onrizal and M Mansor
- [The innovation of ecological fiscal transfers policy at Siak Regency](#)  
Muhammad Ichsan Kabullah



The advertisement features a dark teal background. On the left, the ECS logo is displayed above the text 'The Electrochemical Society Advancing solid state & electrochemical science & technology'. Below this, it announces the '242nd ECS Meeting' from 'Oct 9 – 13, 2022 • Atlanta, GA, US', highlighting 'Presenting more than 2,400 technical abstracts in 50 symposia'. In the center, a portrait of M. Stanley Whittingham is shown next to a Nobel Prize medal. To the right, text identifies the 'ECS Plenary Lecture featuring M. Stanley Whittingham, Binghamton University Nobel Laureate – 2019 Nobel Prize in Chemistry'. A 'Register now!' button with a checkmark icon is positioned above a photograph of a large audience seated in a lecture hall. In the bottom right corner, a person is shown interacting with a futuristic interface of glowing hexagonal icons.

**ECS** The Electrochemical Society  
Advancing solid state & electrochemical science & technology

**242nd ECS Meeting**  
Oct 9 – 13, 2022 • Atlanta, GA, US  
Presenting more than 2,400  
technical abstracts in 50 symposia

**ECS Plenary Lecture**  
featuring  
**M. Stanley Whittingham**,  
Binghamton University  
Nobel Laureate –  
2019 Nobel Prize in Chemistry

**Register now!**

# Application of microwave remote sensing polarimetric synthetic aperture radar for the new geological map of peatland distribution, humidity and its sample properties in Regency of Siak, Riau Province, Indonesia

Husnul Kausarian<sup>1</sup>, Josaphat Tetuko Sri Sumantyo<sup>2</sup>, Ayaka Takahashi<sup>2</sup>, Joko Widodo<sup>2</sup>, Yuta Izumi<sup>2</sup>

<sup>1</sup>Department of Geological Engineering, Universitas Islam Riau, Indonesia

<sup>2</sup>Josaphat Microwave Remote Sensing Laboratory, Center for Environmental Remote Sensing, Chiba University, Japan. In collaboration with the government of Regency of Siak, Riau Province, Indonesia

husnulkausarian@eng.uir.ac.id

**Abstract.** Siak Regency is one of the areas in Indonesia that has peat areas. Events of forest fires occurring in Indonesia caused by the dryness of peatland attracted the attention of many parties to pay attention to this land as a serious matter. From this study, we found variations in soil moisture conditions around 11 - 50%, associated with soil content, the limiting pH parameter in peatland is about 3 to 4. With the approach of remote sensing microwave technology and field validation measurements by counting humidity, sample properties, it is known that the character of the peatland as well as produce the latest geological map for the distribution of peat and the region contained within the Regency of Siak.

## 1. Introduction

Indonesia has peatland area with the total of 14.91 million hectares (Ha) spread over Sumatra with 6.44m Ha (43%), 4.78M Ha in Kalimantan (32%), and 3.69M Ha (25%) in Papua [1]. Important factors of peatland for agriculture are closely related to the nature and character of soil, water, and emissions from greenhouses. These factors should be considered in making decisions or policies and agricultural utilization [2].

Utilization of peatland for agriculture in Indonesia has a long history base. Starting with the success of local people who see peatland as a source to produce traditional food crops, fruits, and spices [3]. Then they grow into large-scale plantations managed in a modern way to get better income like oil palm plantations, but it must be managed appropriately. Given the issue of greenhouse gas emissions, it also motivates local governments to limit the use of peatland, as some emissions come from peatland.

In today, many applications for agriculture and hydrology, groundwater knowledge of moisture is essential: For example, this is an important piece of information to predict peat fires and precise peatland measurements. Therefore, in the last few decades, groundwater content retrieval from multiangle, multifrequency, or multi-polarization SAR data has been the subject of extensive research [4,5].



In practice, soil parameters, such as Soil Roughness and Soil Moisture, are mostly obtained as a single point of measurement, which is to wireless sensor networks in case of soil moisture to increase field-scale monitoring. In addition, soil moisture sensors on this scale can be approached by geophysical methods, such as Ground Penetrating Radar (GPR) and Time Domain Reflectometry (TDR), Ground Albedo Neutron Sensing (GANS) using cosmic-ray probes. As for soil roughness sensor, laser scanning or needle profiler is widely applied [6,7].

The increase of spatial scale from the measurement of a point or wide to a large-scale field is very non-linear, remote sensing extends the retrieval of soil information from field studies to spatial investigations in sub-catchments or entire catchment areas, including highly isolated areas.

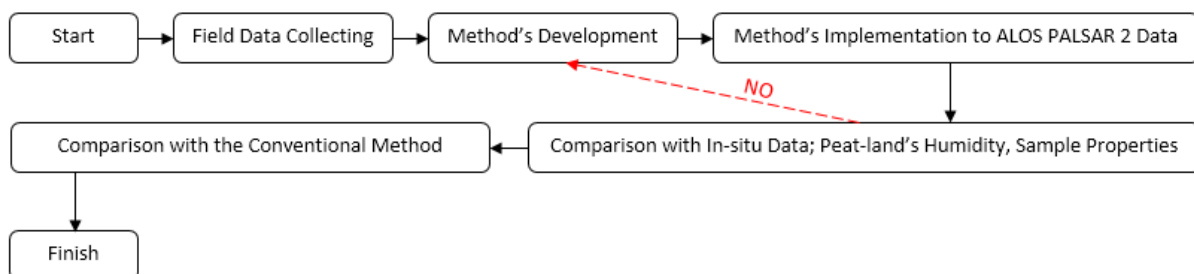
Optics of remote sensing for soil properties depend on daylight and clear weather conditions, RADAR-based methods turn into weather and independent lighting that support sustainable land monitoring strategies. Therefore, Synthetic Aperture Radar (SAR) is used on platforms that are in the air or in outer space.

In this study, we tried to extract soil moisture from peatlands at several centimeters depth and ground roughness called surface parameters with the help of the ALOS-2 SAR [8] satellite and also the soil contents associated with fertility conditions to produce more appropriate agriculture. To verify the application of our methods on peatlands, we collected in-situ soil moisture data through field surveys during the rainy and dry seasons, and soil sampling [9,10].

The objective of this study is to develop a soil moisture retrieval model from peatland using L-Band microwave remote sensing frequency, to develop a model for extracting soil content from peatlands using L-Band microwave remote sensing frequencies, and to make the new geological map for the Regency of Siak and the distribution of peatland area [11,12].

## 2. Methodology

The methodology for this study is shown in the work flowchart for this study, as follows:



**Figure 1.** The framework of the research.

The overall data processing flow found in this study is illustrated in Figure 1. Full polarimetric measurements [13] of PALSAR-2 (Phased Array type L-band Synthetic Aperture Radar 2: the onboard sensor name onboard ALOS-2) were obtained simultaneously with field measurement dates, and with so we can compare the two results appropriately. PALSAR-2 is launched in 2015 on board the ALOS-2. PALSAR-2 is a follow-up of PALSAR which is the first satellite to observe satellites to carry a full polarimetry mode, and this provides complete radar information (backlinks) of the intensity and phase of the signal. It is a great advantage to get a complete comprehension factor that controls radar backscatter in the area especially with complex scattering mechanisms, such as low vegetation, where the impact of vegetation is estimated to be minimal in L-band. In addition, it is also important to get a strong algorithm to estimate soil moisture levels, as well as other parameters. In Table I, we summarize the observations of PALSAR-2.

Among several models to obtain soil moisture, we chose a polarimetric-based SAR approach theoretically, the result using an inversion algorithm using two-component decomposition.



**Table 1.** Formatting sections, subsections, and subsubsections.

PALSAR-2 (ALOS-2 satellite)	Rainy season (Mar.)	Dry season (Aug.)
Observation date	2017. 03. 25	2017. 08. 02
Mode	Quad polarimetry 28°	Quad polarimetry 28°
Direction	Ascending	Descending

### 3. Result and Discussion

#### 3.1. Field survey

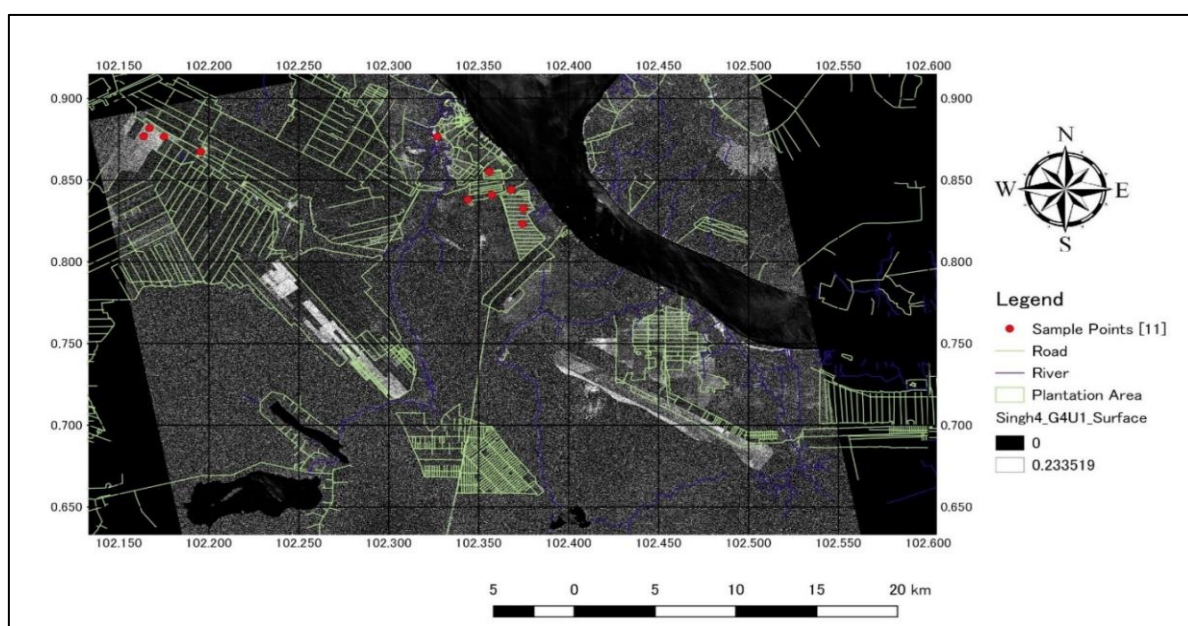
The field survey research was conducted in March and August 2017 in Siak Regency, Indonesia. The main objectives of this research are in-situ data collection, soil moisture, soil roughness, soil content, and vegetation characteristics collected over selected areas within Siak peatland. The selected study area is an open area with sparse vegetation, and thus the forested peatlands are not considered at this time.

There are 11 area points during the survey which run on March and 23 points in July - August 2017, soil moisture measurement is done in various areas by TDR (IMKO) probe at some depth (0cm, 10cm, 20cm) to know which depth most correlated with SAR Signal. Soil roughness measurements were also performed by needle profilers developed by Chiba University (design) and Universitas Islam Riau (construction). Roughness information is also useful for our method.

The field survey on peatland on the Apit River, Siak was conducted on March 23-26, 2017 for the first survey and 26 July - 14 August 2017 for a second field survey. Members of the field survey for March, 2017 led by Prof. Josaphat Tetuko Sri Sumantyo, Ph.D, Dr. Ayaka Takahashi and the team are supported by the Islamic University of Riau headed by Husnul Kausarian, Ph.D and the team as well as the Siak Regency Government.

#### 3.2. Sample location

The position of the survey sample is shown in the visible point of the map (Figure 2).



**Figure 2.** Point Sample location in March 2017 survey.

For the March survey, 11 sample points were taken and also took coordinate positions using the Global Position System. Soil moisture was also measured in this field survey using TDR (Time Domain Reflectometry) 350 Soil Moisture Meter. Survey locations in the Apit River, Siak Riau. The location of the open land is owned by residents and companies.

For land owned by the company are PT. Triomas and PT. Arara Abadi. In this second survey, we have obtained 23 samples and soil moisture measurements using TDR 350.

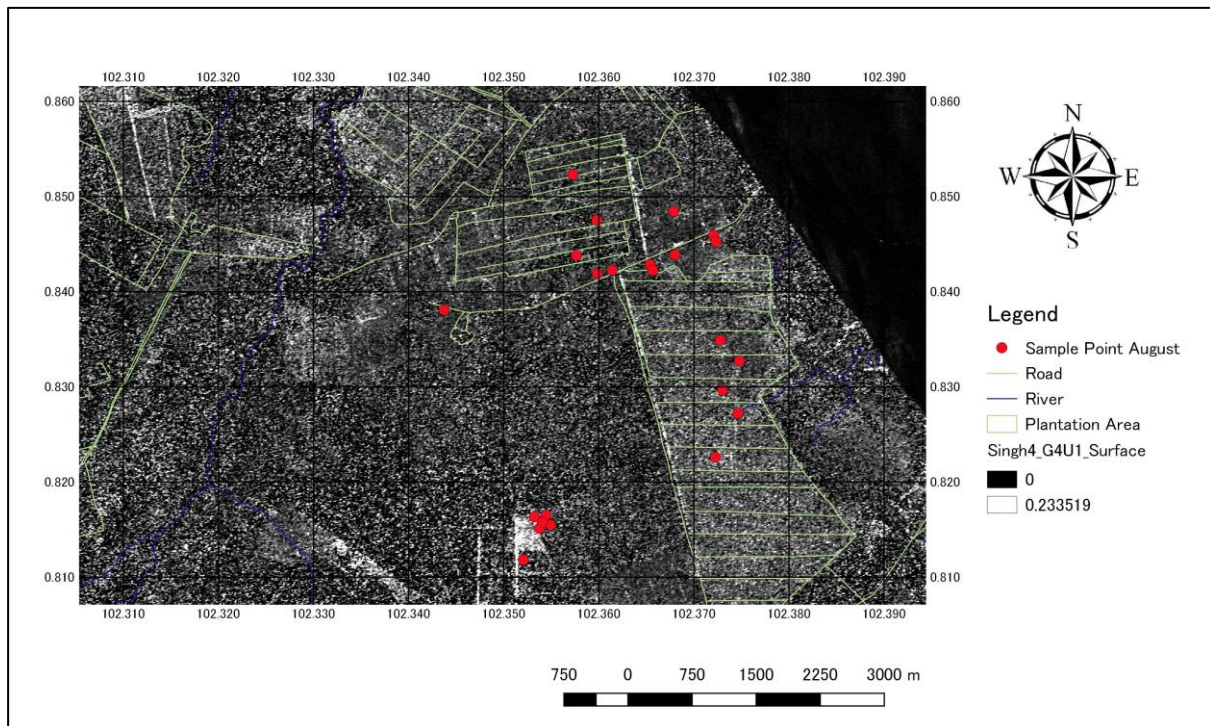


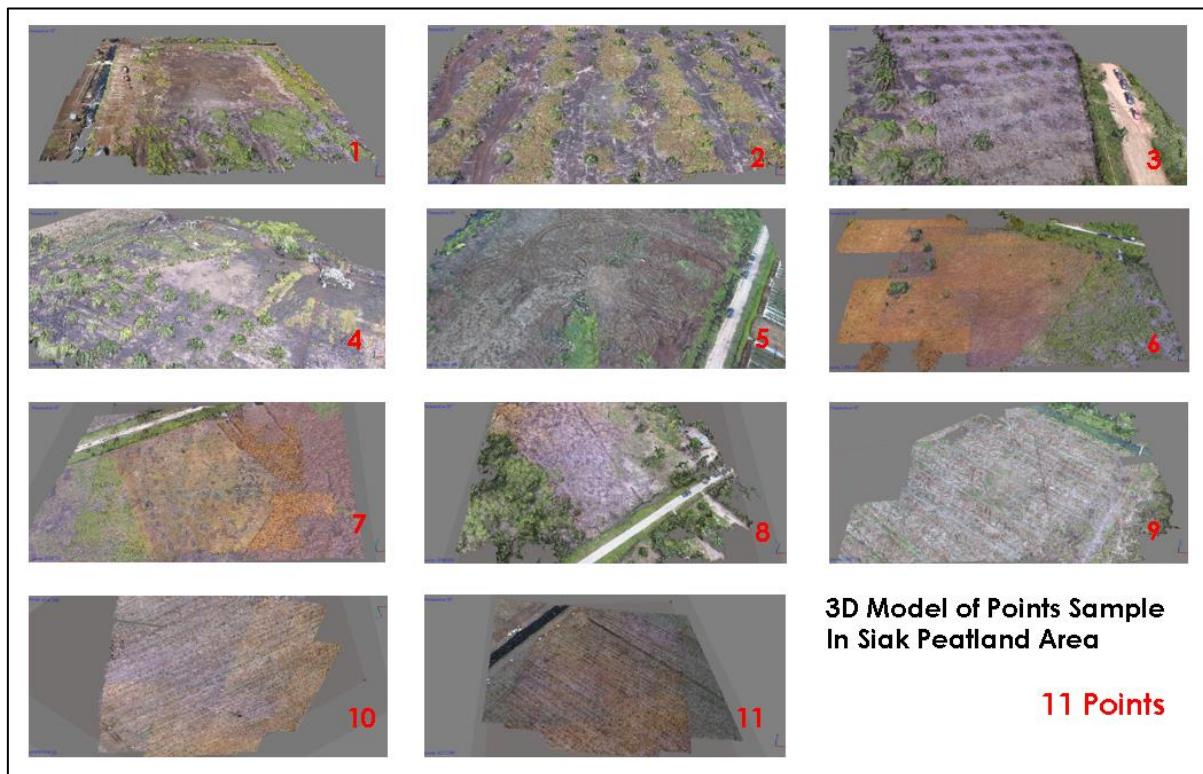
Figure 3. Point Sample location in August 2017 survey.



Figure 4. Measurement field. (left) Measurement of soil moisture with TDR, (right) Measurement of soil roughness with needle profiler.

### 3.3. 3D model of research area

Surveys using an unmanned aerial vehicle which known well as the drone has been developed. Here are some models of research areas that have been produced (Figure 5). From the results of 3D models that have been analyzed, then the entire research area in a flat condition. By using 3D Model, Field circumstances, and roughness of the ground.



**Figure 5.** 3D Model of research area.

### 3.4. Image processing of synthetic aperture radar (SAR)

For SINGH4-G4UI decomposition component has been assembled and developed in this research. This is used to bring backscattering into four components: double bounce, volume, odd (surface), and helix scattering. Odd Scattering is a priority on this surface because its main focus is the scattering of the surface area. Other models will also be developed in addition to the decomposition model.

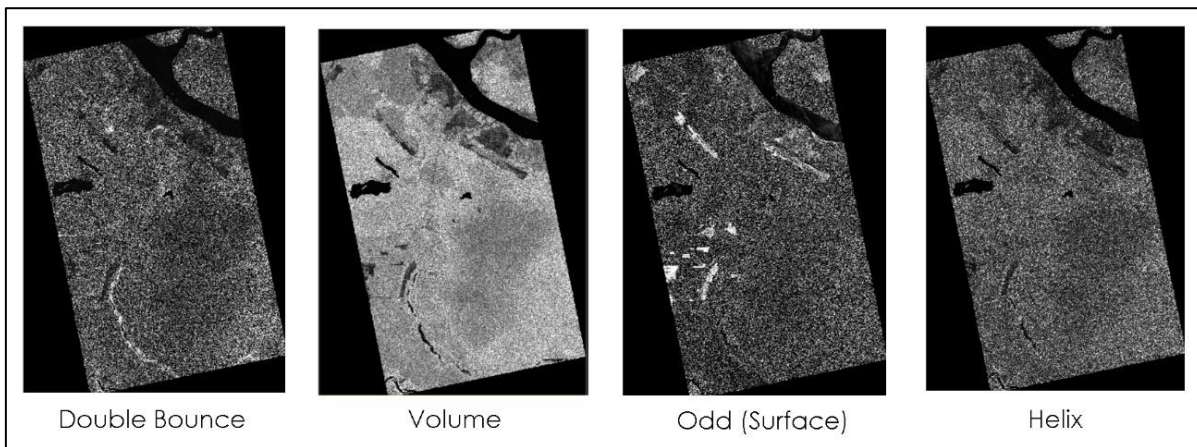
The result of the Odd Scattering analysis pointed out in Figure 6 and 7 shows that there is a very open peatland area beside the river and the color of the darker areas. This study focuses only on this field. Open areas show peatlands after being burned and no agricultural activity. This is a potential area that can be utilized to improve agricultural activities and economic levels of the community in the future. In the subsequent analysis in this study, in addition to soil moisture, will develop a soil moisture model for land suitability assessment for subsequent agricultural recommendations in shallow areas in Siak and in areas after burning.

From this survey, we found that there are variations in soil moisture conditions around 11 - 50%. Associated with soil content, the limiting parameter in peatlands is a pH of about 3 to 4. This condition is very acid for plants to grow well. This is the reason why farmers usually burn peatlands to make the soil more alkaline before planting. From that model, there is a good relationship between backscattering coefficient and pH conditions. In the future, it is possible to conduct land suitability assessment on peatland using microwave remote sensing.

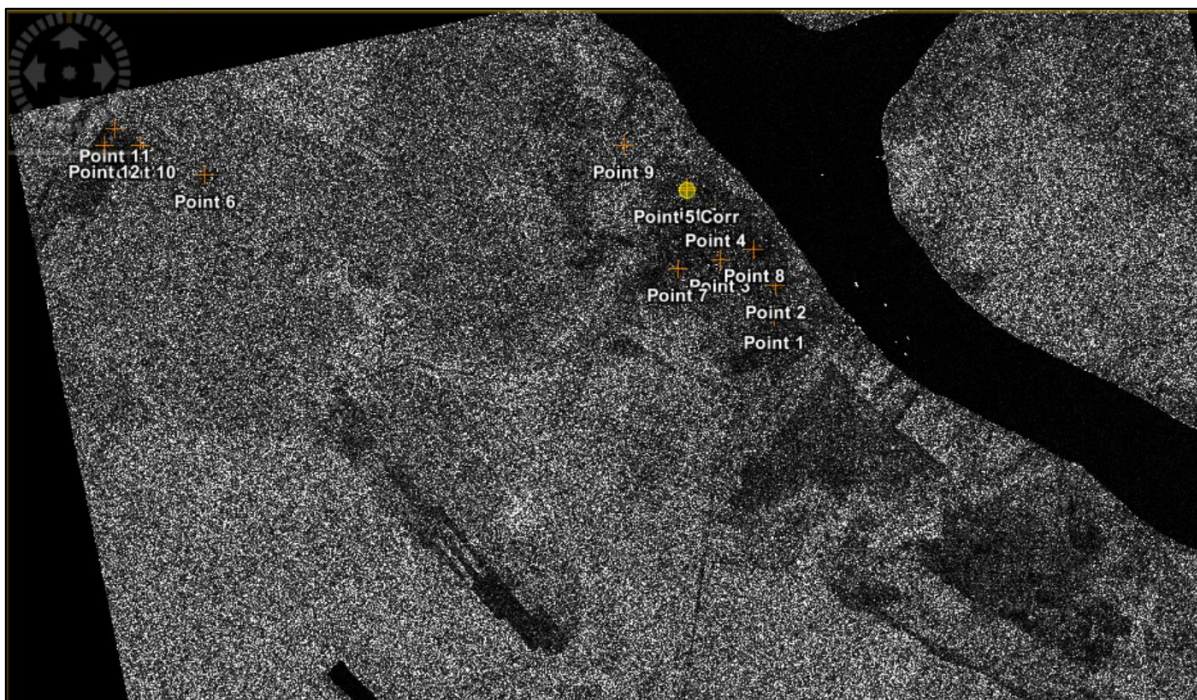
### 3.5. Distribution of peatland in Regency of Siak

From the results of observation and mapping in the field and adjusted with the latest satellite data used, the new distribution map of peatland in Regency of Siak can be seen on the map below:

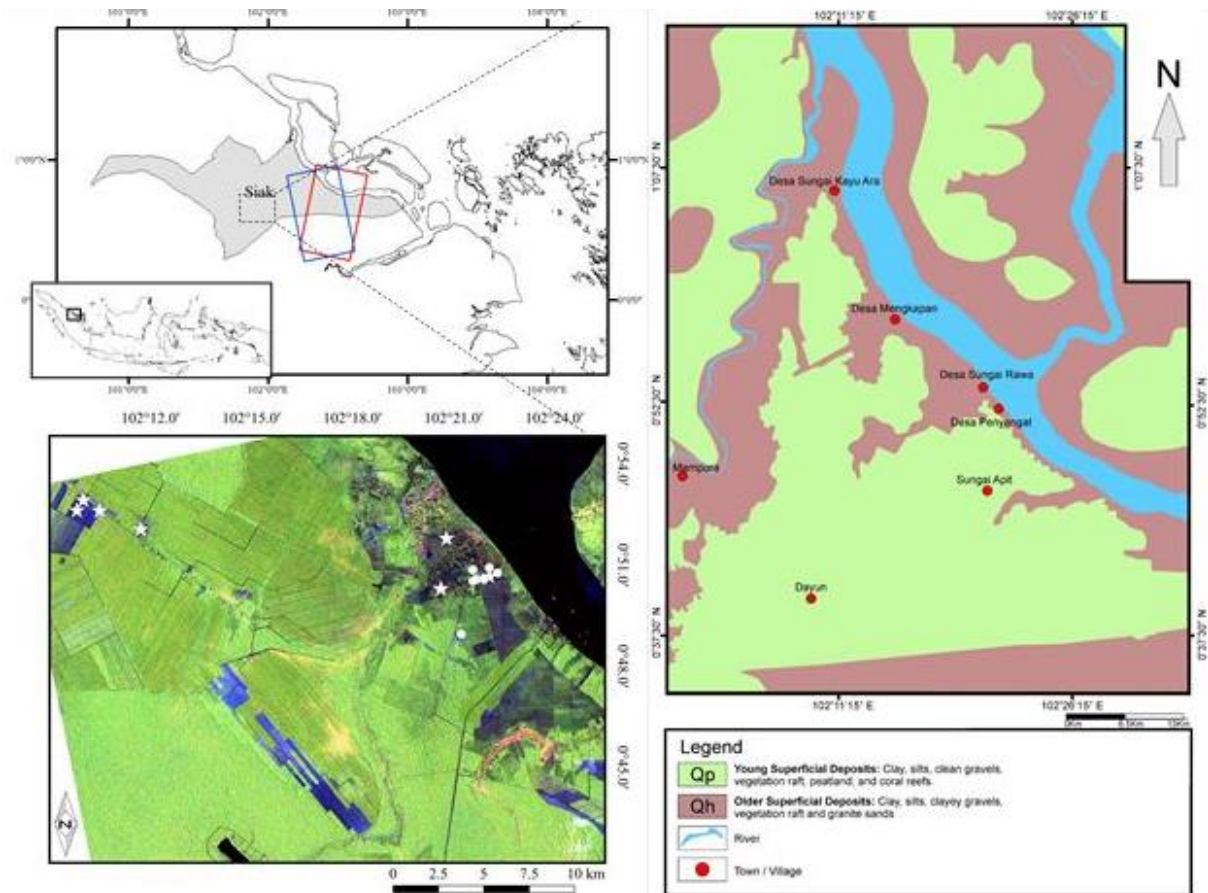
There are many unused open areas in the Peat Area, in Siak regency. The humidity of the soil is on average dry in the dry season and will very easily become a forest fire. From the soil content, the pH conditions are very acidic. More effort is needed to make normal pH for agricultural activities. Microwave remote sensing has the opportunity to assess future land sustainability.



**Figure 6.** Four Components Decomposition from SINGH4-G4UI.



**Figure 7.** Odd/Surface Component Decomposition from SINGH4-G4UI.



**Figure 8.** The New Geological and Peatland Distribution Map in Regency of Siak, Riau Province, Indonesia.

## References

- [1] Segah H 2015 Peatland in Indonesia *Trop. Peatl. Ecosyst.* **49**
- [2] Osaki M, Nursyamsi D, Noor M and Segah H 2016 Peatland in Indonesia *Tropical Peatland Ecosystems* (Springer) pp 49–58
- [3] Kausarian H, Sumantyo J T S, Kuze H, Karya D and Panggabean G F 2016 Silica Sand Identification using ALOS PALSAR Full Polarimetry on The Northern Coastline of Rupat Island, Indonesia *Int. J. Adv. Sci. Eng. Inf. Technol.* **6** 568–73
- [4] Koh L P, Miettinen J, Liew S C and Ghazoul J 2011 Remotely sensed evidence of tropical peatland conversion to oil palm *Proc. Natl. Acad. Sci.* 201018776
- [5] Fujii Y, Iriana W, Oda M, Puriwigati A, Tohno S, Lestari P, Mizohata A and Huboyo H S 2014 Characteristics of carbonaceous aerosols emitted from peatland fire in Riau, Sumatra, Indonesia *Atmos. Environ.* **87** 164–9
- [6] Lubis M Z, Anurogo W, Hanafi A, Kausarian H, Taki H M and Antoni S 2018 Distribution of benthic habitat using Landsat-7 Imagery in shallow waters of Sekupang, Batam Island, Indonesia *Biodiversitas* **19** 1117–22
- [7] Kausarian H, Sri Sumantyo J T, Kuze H, Aminuddin J and Waqar M M 2017 Analysis of polarimetric decomposition, backscattering coefficient, and sample properties for identification and layer thickness estimation of silica sand distribution using L-band synthetic aperture radar *Can. J. Remote Sens.* **43** 95–108
- [8] Kausarian H, Batara B, Putra D B E, Suryadi A and Lubis M Z 2018 Geological Mapping and Assessment for Measurement of Electric Grid Transmission Lines as the Supporting of

- National Energy Program in West Sumatera Area, Indonesia *Int. J. Adv. Sci. Eng. Inf. Technol.* **8**
- [9] SAHARJO B H and NURHAYATI A T I D W I 2006 Domination and composition structure change at hemic peat natural regeneration following burning; a case study in Pelalawan, Riau Province *Biodiversitas J. Biol. Divers.* **7**
- [10] Ramdani F and Hino M 2013 Land use changes and GHG emissions from tropical forest conversion by oil palm plantations in Riau Province, Indonesia *PLoS One* **8** e70323
- [11] LUBIS M Z, PUJIYATI S R I, PAMUNGKAS D S, TAUHID M, ANUROGO W and KAUSARIAN H 2018 Coral reefs recruitment in stone substrate on Gosong Pramuka, Seribu Islands, Indonesia *Biodiversitas J. Biol. Divers.* **19** 1451–8
- [12] Lubis M Z, Anurogo W, Kausarian H, Choanji T, Antoni S and Pujiyati S 2018 Discrete EquiSpaced Unshaded Line Array method for target identification using side scan sonar imagery *IOP Conference Series: Earth and Environmental Science* vol 176 p 12025
- [13] Kausarian H, Sumantyo J T S, Kuze H, Karya D and Wiyono S 2016 The origin and distribution of silica mineral on the recent surface sediment area, Northern Coastline of Rupal Island, Indonesia *ARPJ. Eng. Appl. Sci.* **12** 980–9

Indexed by:



# WORKSHOP ON ENVIRONMENTAL SCIENCE, SOCIETY, AND TECHNOLOGY

This certificate is awarded to

**Husnul Kausarian, Josaphat Tetuko Sri Sumantyo, Ayaka Takahashi,  
Joko Widodo, Yuta Izumi**

As Author of Paper Titled

*Application of microwave remote sensing polarimetric synthetic aperture radar for the new geological map of peatland distribution, humidity and its sample properties in Regency of Siak, Riau Province, Indonesia*

Medan, 14-16 November 2019

Robbi Rahim, M.Kom

*Chairman*